

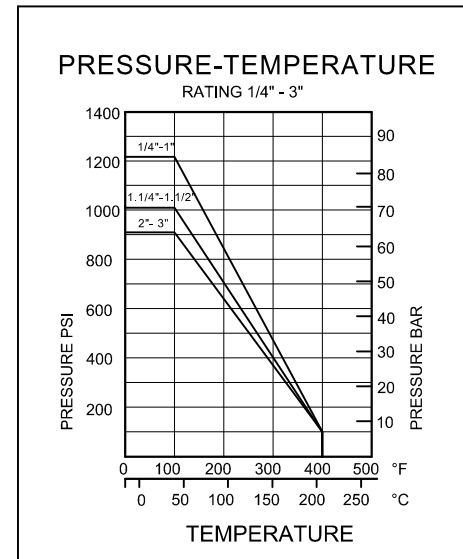
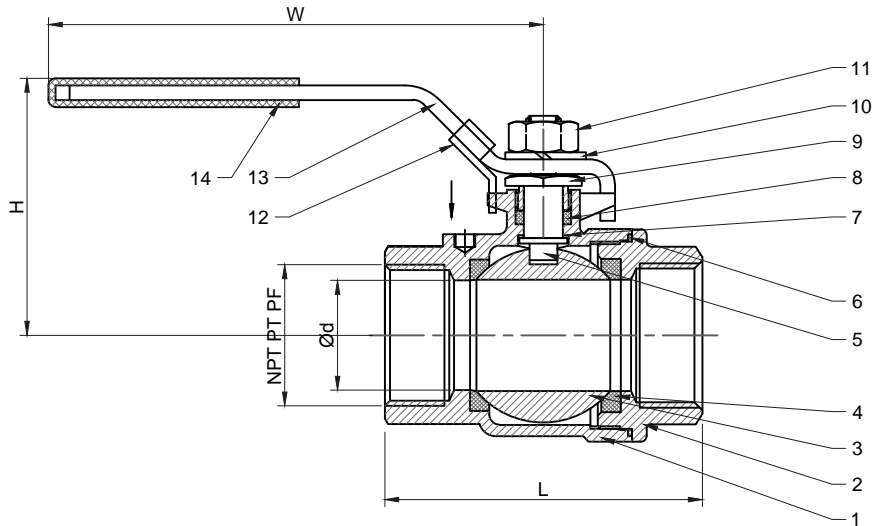
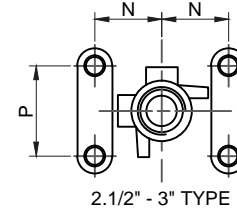
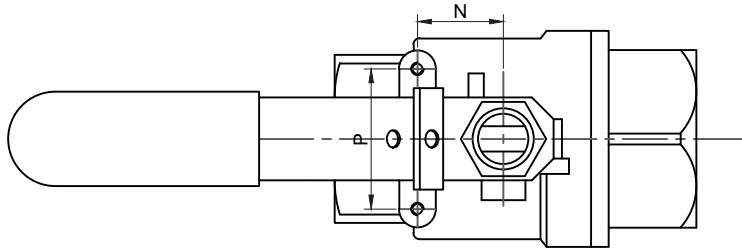
DRG No.

IF IN DOUBT ASK

ALL DIMENSIONS IN MILLIMETRES UNLESS STATED

DO NOT SCALE

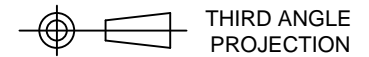
SIZE		d	L	H	W	N	P	Cv FACTOR	WEIGHT Kg	TORQUE Nm
DN	NPS									
8	1/4"	11.6	52	56	102	12.7	28.5	6.0	0.28	3
10	3/8"	12.7	52	56	102	12.7	28.5	7.0	0.23	3
15	1/2"	15	58	65	123	12.7	28.5	10	0.34	4
20	3/4"	20	67	68	123	21	35	25	0.50	7.5
25	1"	25	78	79	153	21	35	35	0.68	10
32	1.1/4"	32	90	84	153	23.5	38	46	1.12	12
40	1.1/2"	40	104	93	183	23.5	38	80	1.84	15
50	2"	50	127	99	183	23.5	38	110	2.98	25
65	2.1/2"	65	158	136	246	35	54	310	5.17	38
80	3"	80	187	146	246	35	54	360	9.92	72



**FEATURES:**

- PIPE THREAD IN ACCORDANCE: NPT, BSPT, DIN259, DIN2999, ISO228 CLASS A
- BLOW-OUT PROOF STEM/FULL PORT
- INVESTMENT CASTING BODY
- 1000PSI (PN63) W.O.G.
- LOCKING DEVICE
- MATERIAL: S45C/ASTM A216Gr-WCB/DIN1.0619 SS316/ASTM A351Gr-CF8M/DIN1.4408

REV	DATE	DESCRIPTION OF REVISION	SIGN



ITEM	DESCRIPTION	QTY	MANUFACTURER / REF	MATERIAL
1	BODY			WCB/CF8M
2	CAP			WCB/CF8M
3	BALL			CF8M
4	SEAT			PTFE
5	STEM			SS316
6	GASKET			PTFE
7	THRUST WASHER			PTFE
8	PACKNIG			PTFE
9	GLAND			SS304
10	SPRING WASHER			SS304
11	STEM NUT			SS304
12	LOCKING DEVICE			SS304
13	HANDLE			SS304
14	HANDLE COVER			PLASTIC

PROJECT	JOB REF : EC
ORDER No.	
CUSTOMER	
EUROVALVE (UK) LTD UNIT 1D CAMPBELL WAY CAMPBELL WAY BUSINESS PARK DINNINGTON S25 3SF TEL: 01909 530444 FAX: 01909 530044	
DRAWN	SMP
DATE	02/09/15
APPROVED	



**DESCRIPTION:**

**EUROTORC MODEL EV 201  
TWO PIECE FULL PORT  
STAINLESS STEEL  
BALL VALVE PN63**

THIS DRAWING IS THE PROPERTY OF EUROVALVE (UK) LTD AND MUST NOT BE COPIED, LENT OR USED IN PART OR IN WHOLE WITHOUT WRITTEN CONSENT.