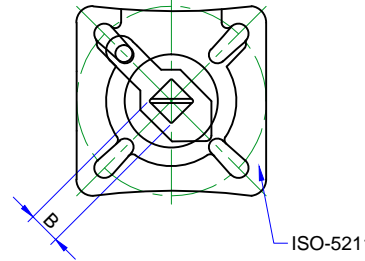
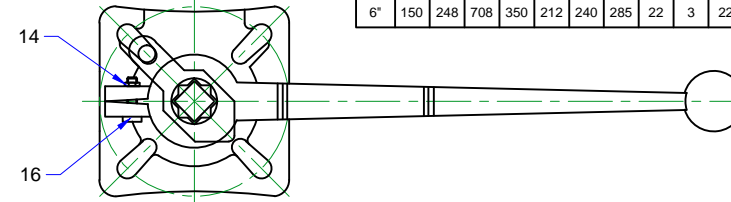
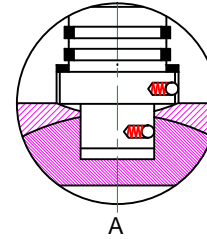
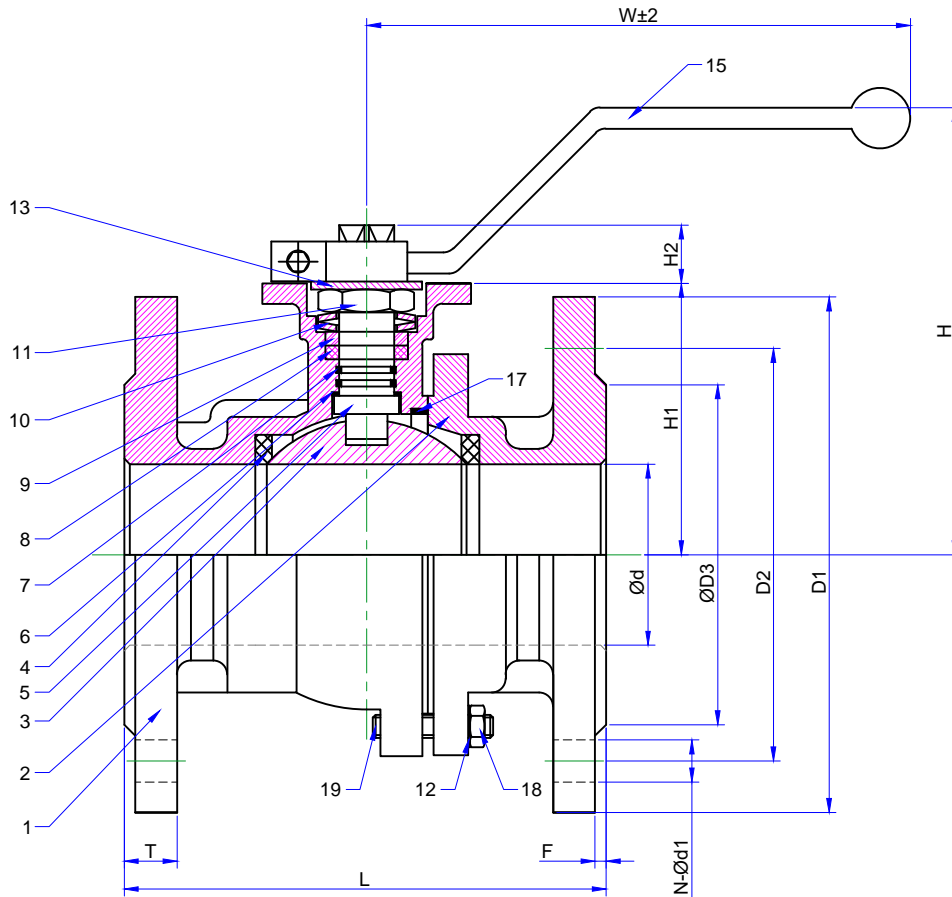


DRG No.

IF IN DOUBT ASK

ALL DIMENSIONS IN MILLIMETRES UNLESS STATED

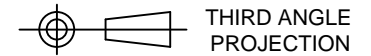
DO NOT SCALE



SIZE	d	H	W	L	D3	D2	D1	T	F	d1	N	H1	H2	B	ISO5211	Break-out Torque	FLANGE
1/2"	15	80	140	115	45	65	95	16	2	14	4	48	11	9	F03/F04	5Nm	PN16/PN40
3/4"	20	95	140	120	58	75	105	18	2	14	4	53	11	9	F03/F04	8Nm	PN16/PN40
1"	25	95	160	125	68	85	115	18	2	14	4	58	14	11	F04/F05	10Nm	PN16/PN40
1.1/4"	32	105	160	130	78	100	140	18	2	18	4	71	14	11	F04/F05	17Nm	PN16/PN40
1.1/2"	38	114	156	140	88	110	150	18	3	18	4	76	17	14	F05/F07	24Nm	PN16/PN40
2"	50	124	156	150	102	125	165	18	3	18	4	85	17	14	F05/F07	31.5Nm	PN16/PN40
2.1/2"	65	148	230	170	122	145	185	18	3	18	8	101	17	17	F07/F10	56Nm	PN16
3"	76	158	230	180	138	160	200	20	3	18	8	111.5	22	17	F07/F10	92Nm	PN16
4"	100	190	320	190	158	180	220	20	3	18	8	141	22	22	F10/F12	128Nm	PN16
5"	125	229	708	325	188	210	250	22	3	18	8	150	27	27	F10/F12	210Nm	PN16
6"	150	248	708	350	212	240	285	22	3	22	8	160	27	27	F10/F12	315Nm	PN16

- FEATURES:
- DIN PN16/40
 - FULL PORT
 - INVESTMENT CASTING
 - BLOW-OUT PROOF STEM
 - ISO5211 MOUNTIN PAD
 - LEVER OPERATED / LOCKING DEVICE
 - DESIGN: DIN3357, EN12516
 - END FLANGE: DIN2543-2545
 - FACE TO FACE: FIN 3202-F4/F5
 - TEST: DIN 3230/3, EN12266

REV	DATE	DESCRIPTION OF REVISION	SIGN



ITEM	DESCRIPTION	QTY	MANUFACTURER / REF	MATERIAL
1	BODY	1		CF8M/CF8
2	CAP	1		CF8M/CF8
3	BALL	1		CF8M/CF8
4	BALL SEAT	2		PTFE
5	STEM	1		SS304/SS316
6	STEM PACKING	1		PTFE
7	O-RING	1		VITON
8	V-RING PACKING	1		PTFE
9	SPRING WASHER	1		SS304
10	BELLEVILLE WASHER	2		SS301
11	NUT	2		SS301
12	WASHER	1		SS304
13	LIMIT PIECE	1		SS304
14	NUT	1		SS304
15	HANDLE	1		SS304
16	BOLT	1		SS304
17	BODY GASKET	1		PTFE
18	NUT	4-8		SS304
19	BOLT	4-8		SS304

DESCRIPTION:

**EUROTORC EV216/EV240
STAINLESS STEEL
FULL BORE BALL VALVE
FLANGED PN16/PN40**

EUROTORC
sales@eurotorc.com
www.eurotorc.com

H:\Eurotorc\Euro Torc Logo.jpg

DRAWN SMP
DATE 02/09/15
APPROVED

THIS DRAWING IS THE PROPERTY OF
EUROTORC AND MUST NOT BE COPIED,
LENT OR USED IN PART OR IN WHOLE
WITHOUT WRITTEN CONSENT.