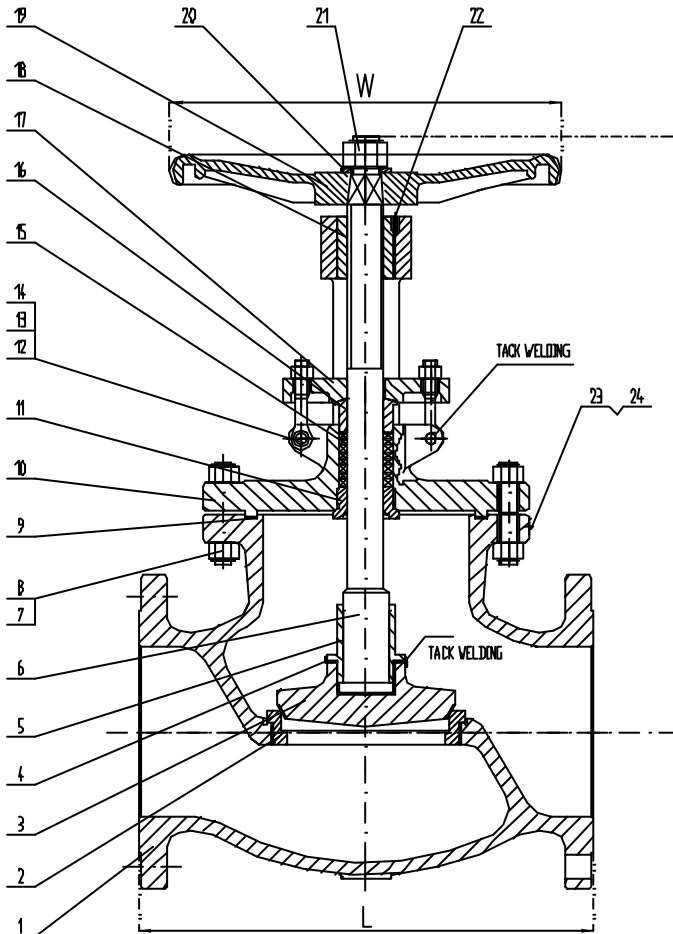


# Cast Steel Globe Valves

## Design & Manufacture Standards

- \* Design & Manufacture to: BS1873
- \* Press/Temp to ANSI B16.34
- \* Face to face to ANSI B16.10
- \* Flange Dimensions/Connections to ASME B16.5: ASME B16.47: ASME B16.25
- \* Test & Inspection to API 598/ISO 5208/EN 12266-1
- \* NACE MR-01-75 (Latest Revision)
- \* Conform to Pressure Equipment Directive 97/23/EC



## Standard Material Specification - API Trim No 8

24	Rivet	BL2/Cu
23	Name Plate	1Cr18Ni9Ti/304
22	Grub Screw	Gr.22H
21	Nut	Gr 8
20	Gasket	200HV
19	Handwheel	ASTM A395
18	Stem Nut	A439 D2
17	Packing Gland	ASTM A216 WCB
16	Packing Plate	ASTM 276 410
15	Packing	Flexible Graphite
14	Nut	ASTM A194 2HM
13	Eye Bolt	ASTM A193 B7M
12	Pin	35
11	Back Seat	ASTM A182 F6
10	Bonnet	ASTM A216 WCB
9	Gasket	Graphite + St/St
8	Stud Bolting	ASTM A193 B7M
7	Nut	ASTM A194 2HM
6	Stem	ASTM A182 F6
5	Thrust Cover	35
4	Thrust Gasket	304 St/St
3	Disc	ASTM A216 WCB + F6
2	Seat	A105 + Stellite
1	Body	ASTM A216 WCB

## Standard Materials (Trims as API600 - 3)

Part	Carbon Steel		Alloy Steel			Stainless Steel				
Body	A216 WCB	A352 LCB	A217 WC6	A217 WC9	A217 C5	A351 CF8	A351 CF8M	A351 CF3	A351 CF3M	CD4MCU
Bonnet	A216 WCB	A352 LCB	A217 WC6	A217 WC9	A217 C5	A351 CF8	A351 CF8M	A351 CF3	A351 CF3M	CD4MCU
Stem	A182 F6a	A182 F304	A182 F304	A182 F304	A182 F304	A182 F304	A182 F316	A182 F304L	A182 F316L	F51
Stud	A193 B7	A320 L7	A193 B16	A193 B16	A193 B8	A193 B8	A193 B8M	A193 B8	A193 B8M	A193 B8M
Nut	A194 2H	A194 4	A194 4	A194 4	A194 8	A194 8	A194 8M	A194 8	A194 8M	A194 8M
Back Seat	A182 F6a	A182 F304	A182 F304	A182 F304	A182 F304	A182 F304	A182 F316	A182 F304L	A182 F316L	F51
Packing Bush	A276 410	A276 304	A276 304	A276 304	A276 304	A276 304	A276 316	A276 304	A276 316	F51
Packing Plate	A216 WCB	A352 LCB	A217 WC6	A217 WC9	A217 C5	A351 CF8	A351 CF8M	A351 CF3	A351 CF3M	CD4MCU