



DIN Range

Z04 Data Sheet

Z06 Data Sheet



Ball valves

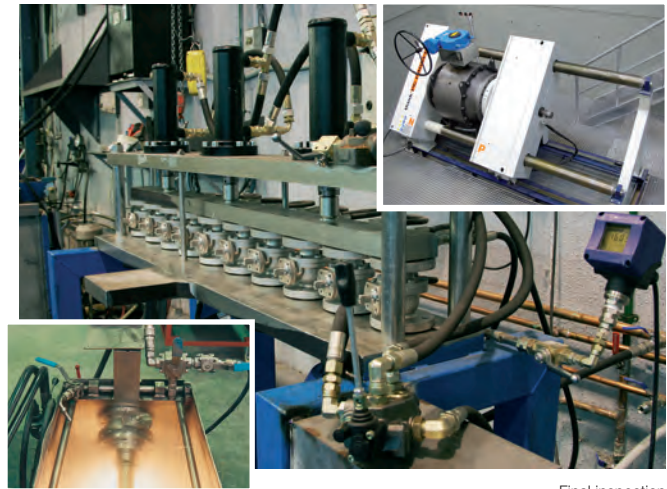
DIN

Certifications and tests



Cryogenic test

Firesafe test



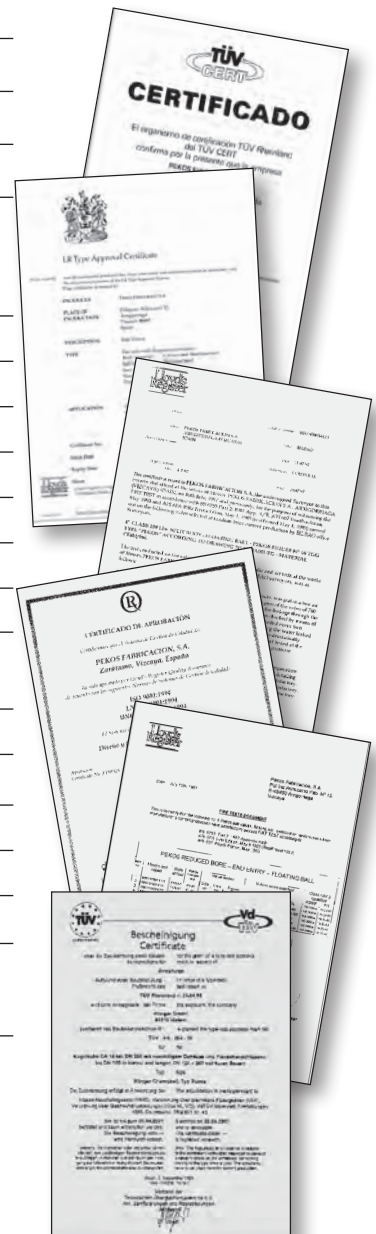
Final inspection

Certificates of the company

ISO 14001	Environmental Management system
ISO 9001	Quality Management system
API Monogram	Standard API 6D. certificate number: 6D-0363

Certificates of the product

Lloyd's Type Approval	Fire Safe & type approval
DNV Type Approval	Type approval
TÜV A352.09 AD Merkblatt A4	Design of the valves
TA - Luft ISO 15848 + VDI 2440	Stem tightness for gas emissions
Directive 2014/68/EU	Pressure equipment directive (CE marking)
Directive 2014/34/EU	ATEX directive - (Ex)II2GD c Tx)
BS 6364	Valves for cryogenic service (Type Approval)
EN 161 / EN 23553	Automatic shut-off valves for gas burners and gas equipment
Helium -40 °C	Leeds University test
EAC	TR CU 010 - TR CU 012 - TR CU 032
Sanitary approval (Russian)	Food processing and Pharmaceutical industry
IEC 61508	SIL3 CAPABLE
UKR SEPRO	Ukraine Certificate
DVGW-EN 13774	Valves for gas distribution with maximum operating pressure less than or equal to 16 bar



Some Company Approvals

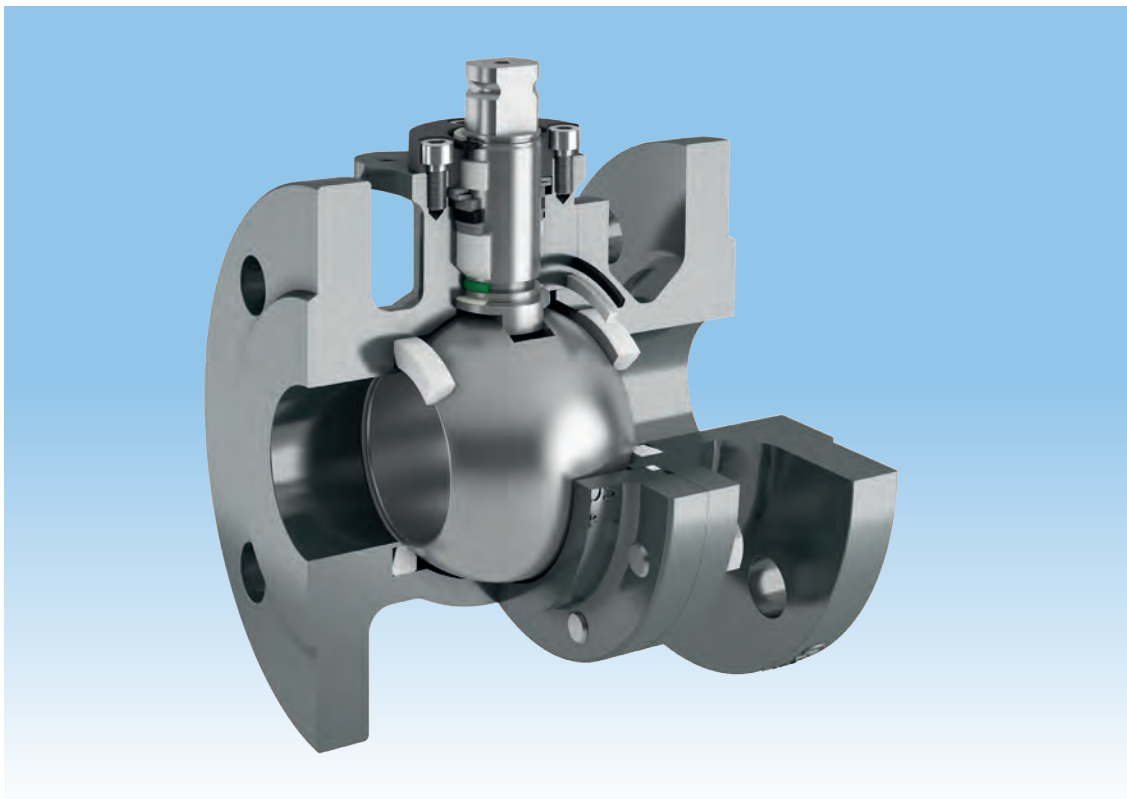
- Repsol-YPF (Spain)
- Al Furat Petroleum (Syria)
- Sasol Technology (South Africa)
- EGPC (Egypt)
- China Petroleum (China)
- Qatar Petroleum (Qatar)
- Petroleum Development Oman (PDO)
- KUWAIT Oil Co. (KOC)
- Zadco (UAE)

General features

- ▼ Design as per EN-12516 , ISO 17292
- ▼ Construction DIN3357 PN10 up to PN40
- ▼ Face to Face as per EN558
- ▼ Flanged drilled as per EN-1092-1 (PN10-40) and ISO7005-1 (PN10-49)

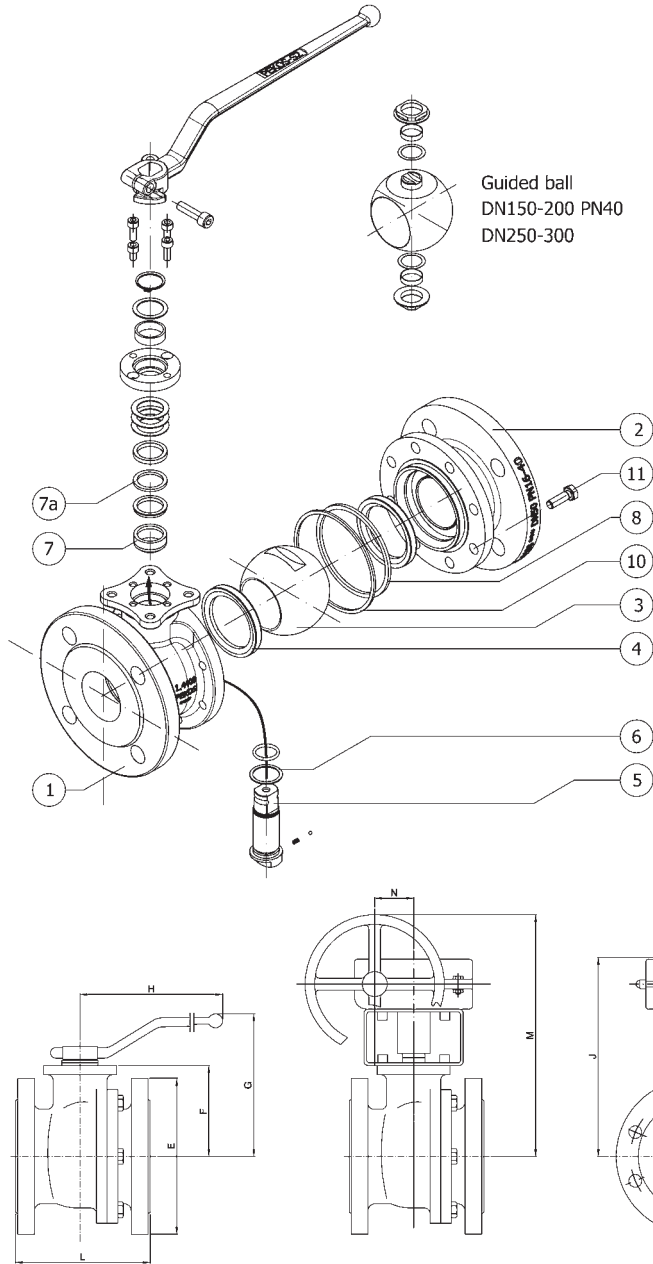
Body constructions and desing advantages

- ▼ Floating ball
- ▼ Guided ball
- ▼ Full Trunnion
- ▼ Split body 2-3 pieces or 1 piece (side-entry)
- ▼ Full and Reduced bore
- ▼ Bidirectional
- ▼ ISO 5211 Top Flange
- ▼ Anti-blow out stem
- ▼ Antistatic stem
- ▼ Autoadjustable packing / Maintenance free
- ▼ Standard construction Fire Safe
- ▼ Self cavity pressure relief
- ▼ Low emission design
- ▼ Double Block and Bleed



FLOATING & GUIDED

Standard materials



Item	Description	Figure	
		ZG04 TTTG Z04 TTTG Z24 TTTG	ZG06 TTTG Z06 TTTG Z26 TTTG
1-2	Body	1.0619	1.4408
3	Ball	1.4408	
4	Seat	PTFE (T) PTFE + FG (R) PTFE + CG (S)	
5	Stem	1.4401	
6	Stem seal	PTFE+FG (R)	
7	Packing 1	PTFE (T)	
7a	Packing 2	Graphite	
8	Body seal 1	PTFE (T)	
10	Body seal 2	Graphite	
11	Body bolt	A2-70	A4-70

Special alloys under request.

Weight (kg)

DN	Weight			
	F1 (1)	F4 (2)	F5 (3)	Gear Box
15	3,2	3	-	-
20	4,3	3,8	-	-
25	5,3	4,7	-	-
32	7,2	6,5	-	-
40	9,3	8,2	-	3
50	13	11,2	-	3
65	20	16,9	-	3
80	26	22,2	-	3
100	36,4	30	-	3
125	68,3*	-	56/62	15
150	94*	-	75/83	15
200	163,5*	-	134/147	21
250	-	-	228/254	21
300	-	-	321/372	31

When two values are indicated, the first correspond to PN16 and the second to PN40.

* Weight only for PN16

Dimensions (mm)

DN	D	L			E		F	G	H	I	J	K	M	N
		F1 (1)	F4 (2)	F5 (3)	PN16	PN40								
15	15	130	115	-	95	95	52	100	185	-	-	-	-	-
20	20	150	120	-	105	105	54	102	185	-	-	-	-	-
25	25	160	125	-	115	115	60	110	185	-	-	-	-	-
32	32	180	130	-	140	140	65	115	185	-	-	-	-	-
40	40	200	140	-	150	150	75	129	293	170	203	300	313	50
50	50	230	150	-	165	165	83	137	293	170	210	300	321	50
65	65	290	170	-	185	185	96	150	293	170	223	300	334	50
80	80	310	180	-	200	200	114	187	350	170	261	300	372	50
100	100	350	190	-	220	235	128	201	350	170	275	300	386	50
125	125	425*	-	325	250	270	158	247	680	210	326	400	479	71
150	150	480*	-	350	285	300	175	285	740	210	343	400	496	71
200	200	600*	-	400	340	375	245	354	750	272	418	500	566	86
250	250	-	-	450	405	450	285	-	-	272	458	500	682	86
300	300	-	-	500	460	515	329	-	-	272	518	600	732	105

(1) EN 558 serie 1 - (2) EN 558 serie 14 or 27 - (3) EN 558 serie 15 or 27.

Dimensions with gear box correspond only to PN16, gear box for PN40 under request.

Technical features

Breakaway torques (Nm)

Floating & Guided

DN	15	20	25	32	40	50	65	80	100	125	150	200	250	300
PN16	8	10	14	23	31	46	55	85	110	240	380	540	950	1200
PN40	12	14	17	30	40	65	85	130	190	350	470	975	1290	1450

Full Trunnion

DN	50	80	100	125	150	200	250	300
PN16	46	100	139	320	420	620	1075	1360
PN40	94	242	395		875	1364	1794	2187

Test are made with water and standar seats maximum P according to body at seat rating. With S or R seats type and with clean fluids, the above torque values should be increased 30%.
Breakaway torque can be increased approximately 50% after long periods of inactivity during the first cycles.

Kv values

DN	15	20	25	32	40	50	65	80	100	125	150	200	250	300
Kv (m³ /h)	20	44	88	105	200	310	480	960	1700	2450	4100	8200	11500	18300

Leak tests

Test specifications according DIN 3230 part 3, EN 12266-1
Class A and ISO 5208.

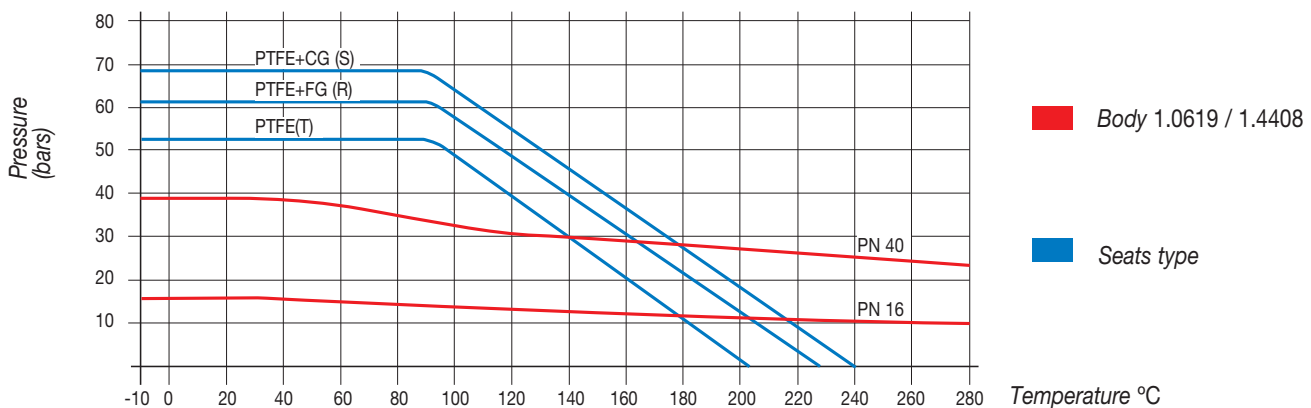
	Hydraulic shell test	Hydraulic seat test	Pneumatic seat test
PN 10	15 bar	11 bar	6 bar
PN 16	24 bar	18 bar	6 bar
PN 40	60 bar	44 bar	6 bar

Test Duration

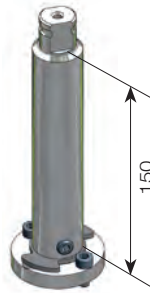
DN	BODY	SEAT
50	0.25 min	1 min
65	1 min	
80		
100		
125		
150	2 min	2 minn
200		
250		
300		

Pressure-Temperature limitations

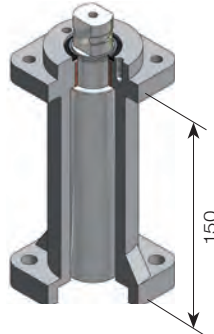
Pressure - Temperature graph



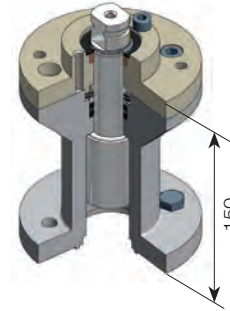
Stem extensions



Simple stem extension

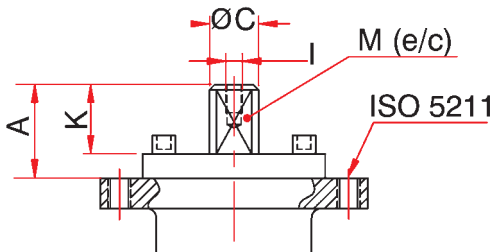


Standard extension



Security and fugitive emission detector

Top flange ISO 5211

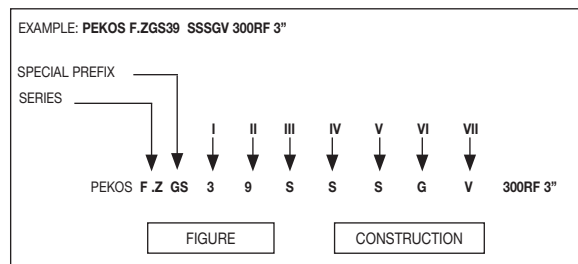


DN	15	20	25	32	40	50	65	80	100	125	150	200	250	300
ISO 5211	F05-1	F05-2	F07		F10		F12		F14					
M	11	11	14	14	17	17	17	22	22	27	27	36	36	36
C	14	14	18	18	22	22	22	28	28	36	36	48	48	48
A	13.5	13.5	19.5	19.5	30	30	30	40	40	50	50	63	63	73
K	11	11	17	17	20	20	20	22	22	35	35	40	40	60
I	M4	M4	M4	M4	M6	M6	M6	M8	M8	M8	M8	M8	M8	M8

How to order PEKOS ball valves

SERIES	SPECIAL PREFIX	FIGURE		COMPONENT OTHER THAN BALL & BODY	
		I CLASS	B BODY BALL		
Z-Updated packing system	B-Sampling valve C-Cavity filler D-Seat and stem Sealant fitting D4-Seat Sealant fitting D5-Stem Sealant fitting DBB-3 pieces, 2 balls F-Security stem extension G-Guided ball H-Heating jacket (semi) I-Inclined stem J-Heating jacket (full) K-3 pieces M-Metallic seat N-PMSS O-Degreased P-Protected seat R-Scraper Seat RB-Reduced Bore S-Spring seat TH-Threaded Body U-Unidirectional V-O-ring seat W-Welded body X-Double Piston effect	0 - F4/F5 1 - CL-150 2 - F1/F2 3 - CL-300 4 - CL-400 5 - Tank bottom 6 - CL-600 7 - 4 ways 8 - 3 ways 9 - Wafer 15 - CL-1500 25 - CL-2500 80 - CL-800 90 - CL-900	0 Special 1 Cast iron 2 Cast iron 3 WCC A105 4 WCC A105 5 LCC LF2 6 CF8M F316 1.4408 1.4401 1.4539 904L 7 CF3M F316L 1.4409 1.4404 8 LCC LF2 9 1.0619QT 1.622 1.0352	Special CF8M 1.4408 CF8M 1.4408 CF8 1.4027 CA15 AISI 410 A105/LF2+ENP A105/LF2+ENP 1.4027 A105/LF2+ENP CA15 1.0619 1.4408 1.0352 1.4462 WCC CF8M A105 F51 LF2 + ENP CF8M CF8M F316 F51 1.4408 1.4408 1.4401 1.4462 1.4539 1.4539 904L 904L CF3M CF3M F316L F51 1.4409 1.4409 1.4404 1.4462 LCC CF8M LF2 F51 1.0619QT 1.4408 1.6220 1.4462	+ NON STANDARD MATERIAL

CONSTRUCTION				
III SEAT	IV BALL	V BODY SEAL		VII STEM O-RING
		1	2	
B-PFA	B-PFA	B- PFA		A-FEPM
C-Cr Carbide (CrC)	G-GRAPHITE	A-FEPM		E-EPDM
D-DELFIN®	R-PTFE + 25% FG	B-PFA		F-FLUOROSILICONE (FVMQ)
E-PTFE-EKONOL	S-PTFE+ 25% CG	C-METAL SEAL		H-HNBR
G-GRAPHITE	T-PTFE	E-EPDM		I-SILICONE (VMQ)
H-COLMONOY	U-UHMWPE	F-FLUOROSILICONE (FVMQ)		K-FFKM
K-PCTFE		G-GRAPHITE		L-CHLOROPRENE
L-Stellite		H-HNBR		N-NBR
N-DEVILON® V		I-SILICONE (VMQ)		O-NEOPRENE
O-PEEK+PTFE+FG		K-FFKM		V-FKM
P-PEEK		L-CHLOROPRENE		
Q-PEEK + 12% PTFE		N-NBR		
R -PTFE + 25% FG		R-PTFE + 25% FG		
S-PTFE+ 25% CG		S-PTFE + 25% CG		
T-PTFE		T-PTFE		
U-UHMWPE		U-UHMWPE		
V-FKM		V-FKM		
X-PTFE + 50% SS.				
W-Tu Carbide (WC)				
Z-PEEK+PTFE+CG				



DIN

From DN15 up to DN 600
DIN PN 10 up to PN 420
From -196° C up to +700° C

Eurovalve UK Limited
Unit 1D Campbell Way
☎ (01909) 530444
Fax: (01909) 530044
Email: sales@eurovalve.co.uk



Split body floating



Full trunnion



Cryogenic



End entry floating



3 & 4 way floating and trunnion



Wafer



Heating jacket



Tank bottom

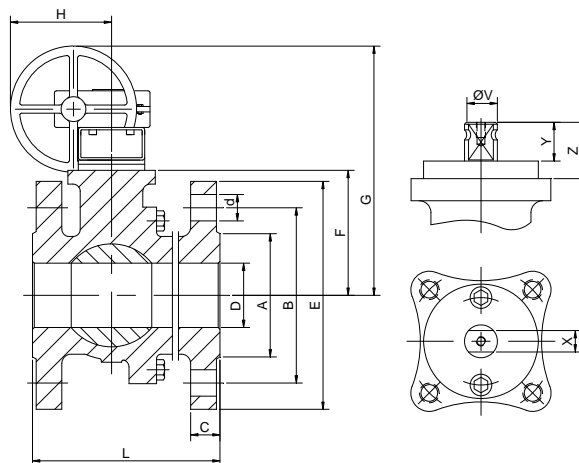
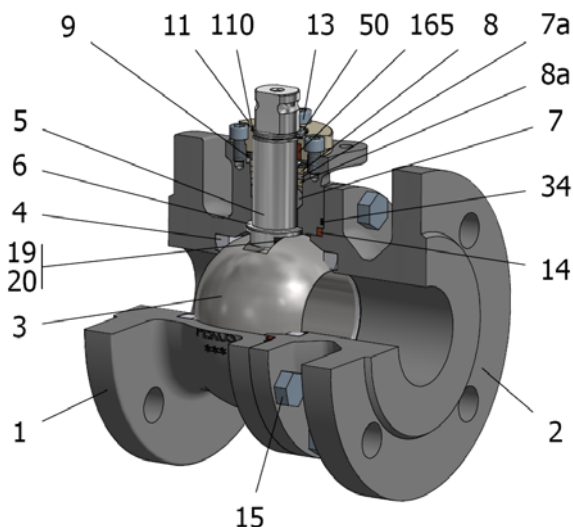


Metal to metal



Three piece forged

FIG.Z 04 TTTG PN16 DN15/200 F4-F5



Position	Description	Material
01	Body 1	C.S. 1.0619
02	Body 2	C.S. 1.0619
03	Ball	S.S. 1.4408
04	Seat	PTFE (modified)
05	Stem	S.S. 1.4401
06	Stem seal	PTFE (modified)+FG
07	Stem packing 1	PTFE (modified)
07a	Stem packing 2	Graphite
08	Gland packing 1	S.S. 1.4401
09	Spring washer	S.S. 1.4310
11	Cover	S.S. 1.4408
13	Cover bolt	A4-70
14	Body seal 1	PTFE (modified)
15	Body bolt	A2-70
19	Spring	S.S. 1.4401
20	Antistatic ball	S.S. 1.4401
34	Body seal 2	Graphite
50	Subjection ring	S.S. 1.4301
110	Subjection ring seal	S.S. 1.4401 Nitrided
165	Stem bearing	PTFE (modified)+FG

General features

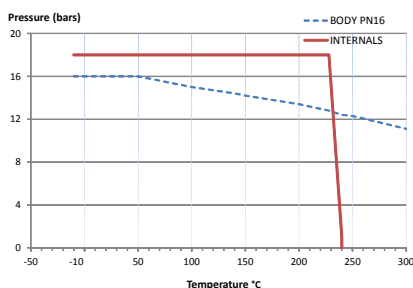
- Floating ball.
- Split body.
- Full bore.
- Soft seat.
- Bidirectional.
- Fire Safe.
- Anti Blow out proof stem.
- Autoadjustable packing.
- Anti static device.
- Self-cavity pressure relief.

Standards

- Top flange ISO 5211
- Flanges EN 1092-01
- Face to face EN 558
- Testing EN-12266, ISO 5208
- Design EN-12516, ISO 17292

Official approvals

- EN 161/EN ISO 23553-1
- CERTIFICATE FIRE SAFE
- TÜV.AD-MERKBLATT A4
- TA-LUFT VDI 2440
- ISO 15848-1
- ATEX 2014/34/EU
- PED 2014/68/EU
- SIL 3 CAPABLE



PEKOS GROUP CERTIFICATES:



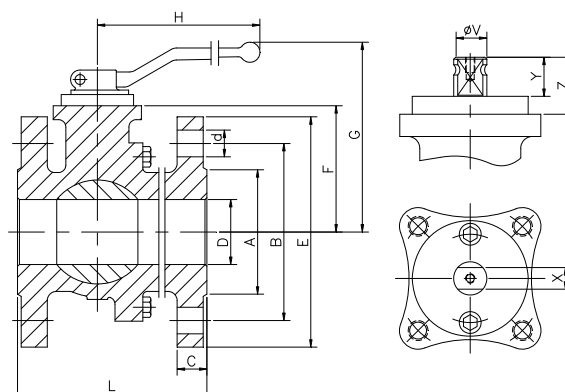
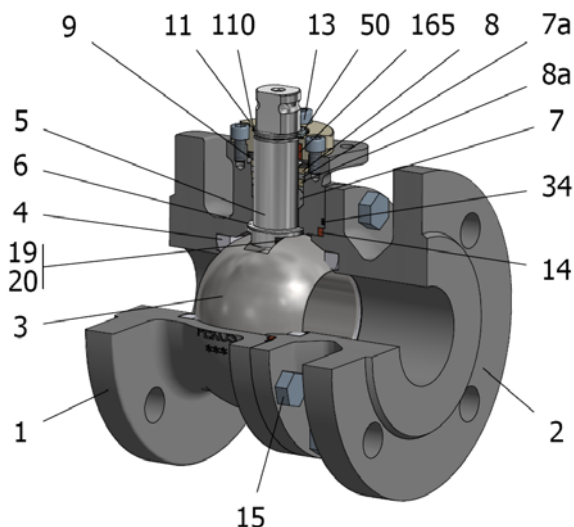
DIMENSIONS & Technical information

DN	PN	D	L	E	A	B	C	F	H	G	V	X	Y	Z	n x d	ISO 5211	Torque	MAST	Weight
15	16	15	115	95	45	65	16	51	-	-	14	11	11	13,5	4 x 14	F05	8	43,5	3
20	16	20	120	105	58	75	18	53	-	-	14	11	11	13,5	4 x 14	F05	10	43,5	4
25	16	25	125	115	68	85	18	59	-	-	18	14	17	19,5	4 x 14	F05	14	94,5	5
32	16	32	130	140	78	100	18	64	-	-	18	14	17	19,5	4 x 18	F05	21	94,5	6
40	16	40	140	150	88	110	18	75	271	366	22	17	20	30	4 x 18	F07	31	250,4	8
50	16	50	150	165	102	125	18	83	271	374	22	17	20	30	4 x 18	F07	46	250,4	11
65	16	65	170	185	122	145	18	96	271	387	22	17	20	30	8 x 18	F07	55	250,4	17
80	16	80	180	200	138	160	20	114	271	435	28	22	22	40	8 x 18	F10	85	522,5	22
100	16	100	190	220	158	180	20	128	271	449	28	22	22	40	8 x 18	F10	110	522,5	30
125	16	125	325	250	188	210	22	158	271	479	36	27	35	50	8 x 18	F12	240	1073,4	56
150	16	150	350	285	212	240	22	175	271	496	36	27	35	50	8 x 22	F12	380	1073,4	75
200	16	200	400	340	268	295	24	245	271	566	48	36	40	63	12 x 22	F14	540	2544,3	134

** Depending on service conditions. * Dimensions are in mm. * Torque & MAST are in Nm. * Weight is in Kilogram

* Torque values have been measured ΔP at maximum rating at room temperature

FIG.Z 06 TTTG PN16 DN15/200 F4-F5



Position	Description	Material
01	Body 1	S.S. 1.4408
02	Body 2	S.S. 1.4408
03	Ball	S.S. 1.4408
04	Seat	PTFE (modified)
05	Stem	S.S. 1.4401
06	Stem seal	PTFE (modified)+FG
07	Stem packing 1	PTFE (modified)
07a	Stem packing 2	Graphite
08	Gland packing 1	S.S. 1.4401
08a	Gland packing 2	S.S. 1.4401
09	Spring washer	S.S. 1.4310
11	Cover	S.S. 1.4408
13	Cover bolt	A4-70
14	Body seal 1	PTFE (modified)
15	Body bolt	A4-70
16	Handle	WCB
17	Handle bolt	1.045(8.8)
19	Spring	S.S. 1.4401
20	Antistatic ball	S.S. 1.4401
34	Body seal 2	Graphite
50	Subjection ring	S.S. 1.4021
110	Subjection ring seal	S.S. 1.4401 Nitrided
165	Stem bearing	PTFE (modified)+FG

General features

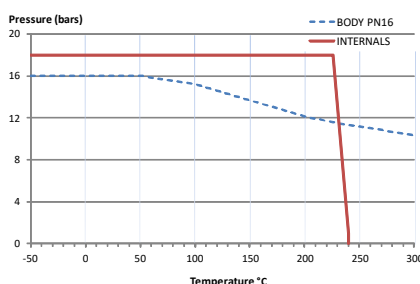
- Floating ball.
- Split body.
- Full bore.
- Soft seat.
- Bidirectional.
- Anti Blow out proof stem.
- Autoadjustable packing.
- Anti static device.
- Self-cavity pressure relief.

Standards

- Top flange ISO 5211
- Flanges EN 1092-01
- Face to face EN 558
- Testing EN-12266, ISO 5208
- Design EN-12516, ISO 17292

Official approvals

- CERTIFICATE FIRE SAFE
- TÜV.AD-MERKBLATT A4
- TA-LUFT VDI 2440
- ISO 15848-1
- ATEX 2014/34/EU
- PED 2014/68/EU
- SIL 3 CAPABLE
- EN 161/EN ISO 23553-1



PEKOS GROUP CERTIFICATES:

ISO 9001-2008 / 2014/68/EU /API-6D



DIMENSIONS & Technical information

DN	PN	D	L	E	A	B	C	F	H	G	V	X	Y	Z	n x d	ISO 5211	Torque	MAST	Weight
15	16	15	115	95	45	65	16	51	185	105	14	11	11	13,5	4 x 14	F05	8	43,5	3
20	16	20	120	105	58	75	18	53	185	107	14	11	11	13,5	4 x 14	F05	10	43,5	4
25	16	25	125	115	68	85	18	59	185	113	18	14	17	19,5	4 x 14	F05	14	94,5	5
32	16	32	130	140	78	100	18	64	185	118	18	14	17	19,5	4 x 18	F05	21	94,5	6
40	16	40	140	150	88	110	18	75	293	145	22	17	20	30	4 x 18	F07	31	250,4	8
50	16	50	150	165	102	125	20	83	293	153	22	17	20	30	4 x 18	F07	46	250,4	11
65	16	65	170	185	122	145	18	96	293	166	22	17	20	30	8 x 18	F07	55	250,4	17
80	16	80	180	200	138	160	20	114	350	205	28	22	22	40	8 x 18	F10	85	522,5	22
100	16	100	190	220	158	180	20	128	350	220	28	22	22	40	8 x 18	F10	110	522,5	30
125	16	125	325	250	188	210	22	158	740	267	36	27	35	50	8 x 18	F12	240	1073,4	56
150	16	150	350	285	212	240	22	175	740	284	36	27	35	50	8 x 22	F12	380	1073,4	75
200	16	200	400	340	268	295	24	245	750	362	48	36	40	63	12 x 22	F14	540	2544,3	134

** Depending on service conditions.

* Dimensions are in mm.

* Torque & MAST are in Nm.

* Weight is in Kilograms

* Torque values have been measured ΔP at maximum rating at room temperature