

**ZWICK**  
ARMATUREN GMBH 

# TRI-CON

DATA SHEETS

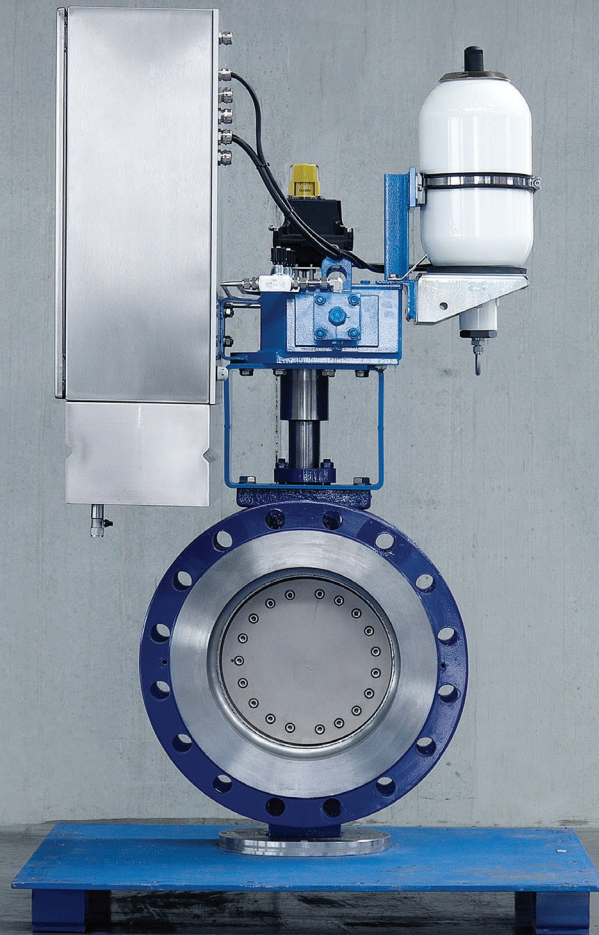
# TRI-CON

## CONTENT

The complete range	8
Series TRI-CON	9
Model Numbers	29
Thread Dimensions	30
F-Connection Mounting Bracket	33
Standard Materials	34
Shaft Ends	36
Spare Parts Kit	38
Certificates	39

[www.eurovalve.co.uk](http://www.eurovalve.co.uk)

Eurovalve UK Limited  
Unit 1D Campbell Way  
 (01909) 530444  
Fax (01909) 530044



## ZWICK TRI-CON

### **Triple-Offset Conical Seating**

TRI-CON valves incorporate a unique third offset with a 25-degree incline, eliminating the friction between the laminated seal ring and the body seat. The resulting camming action allows the stainless and graphite laminated seal ring, with a corresponding 25-degree inclined surface, to seat into an inclined 25-degree body seat. The result: true cone-in-cone seating and reliable zero-leakage performance.

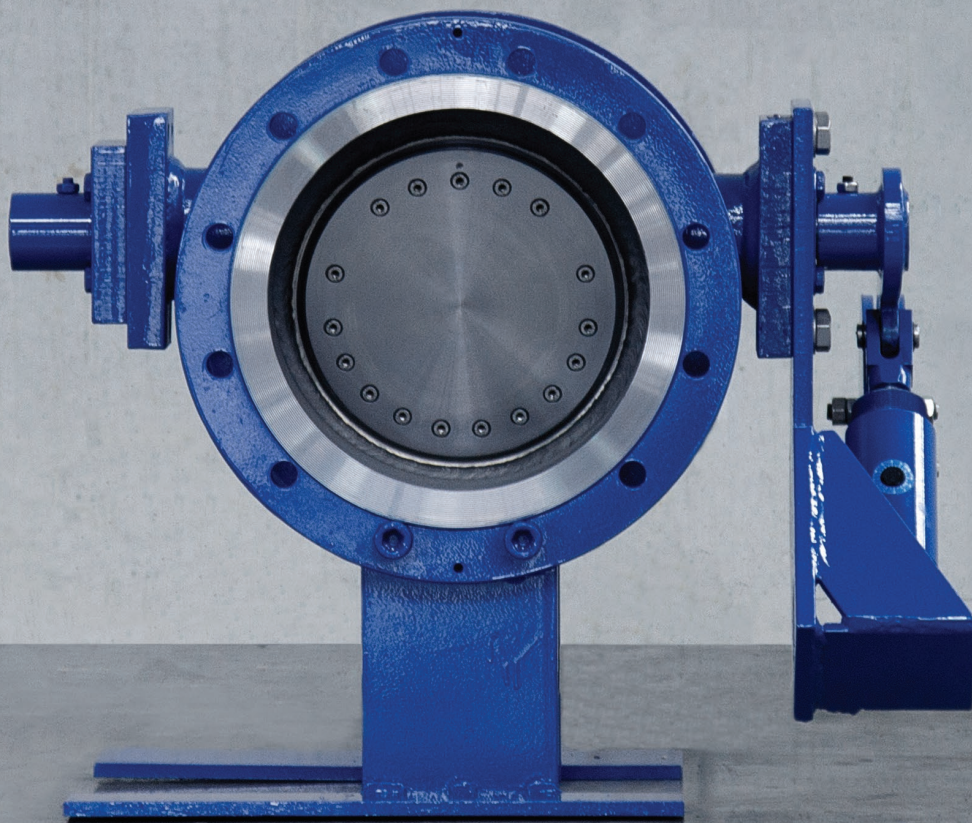
### **Statically Held Laminated Seal Ring/Flat Gasket**

TRI-CON valves offer the widest laminated seal ring in the market today, made possible by true cone-in-cone seating design. This wide lamination of stainless steel and graphite provides a forgiving sealing surface when it is seated against line scale or particulates. Multiple laminations naturally translate into multiple sealing surfaces to achieve zero leakage.

### **Self-Centering Disc Design – No Pinning of shaft to Disc**

Zwick's TRI-CON valve employs a self-centering disc that is keyed to the shaft, not pinned. Other triple-offset valve manufacturers permanently pin or affix their discs to the shaft. To accommodate for differential thermal expansion of the shaft and the disc, other manufacturers must rely on a seal ring that compresses radially. This makes their designs subject to jamming due to thermal expansion.

**HIGH STANDARD  
VALVES FOR  
NON-STANDARD  
CONDITIONS.**

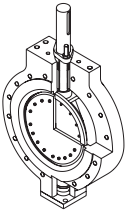
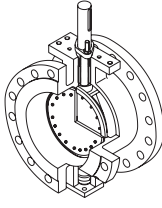


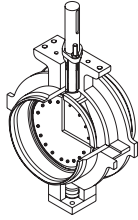
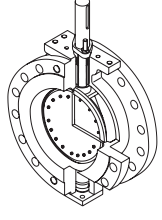


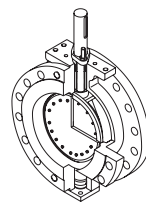
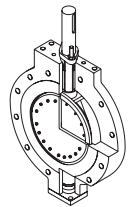
# TRI-CON

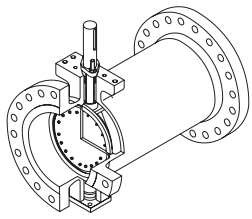
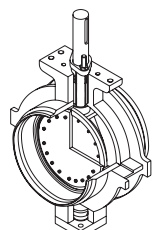
## THE COMPLETE RANGE OF SERIES TRI-CON

All models are available in different materials. Higher pressure classes, bigger sizes and different face to face dimensions on request.

<p>Modell L1 / Anflansch Baulänge nach DIN EN 558 R16 (DIN 3202 K3) Modell L1 / Lug Type Face to Face acc. to DIN EN 558 R16 (DIN 3202 K3)</p>	<p>Modell F1 / Doppelflansch Baulänge nach DIN EN 558 R14 (DIN 3202 F4) Modell F1 / Double Flange Face to Face acc. to DIN EN 558 R14 (DIN 3202 F4)</p>
	
<p>Nennweite DN 50 – 900 Druckstufen PN 10/16/25/40/63/100 Size DN 50 – 900 Pressure PN 10/16/25/40/63/100</p>	<p>Nennweite DN 80 – 1500 Druckstufen PN 10/16/25/40/63/100 Size DN 80 – 1500 Pressure PN 10/16/25/40/63/100</p>

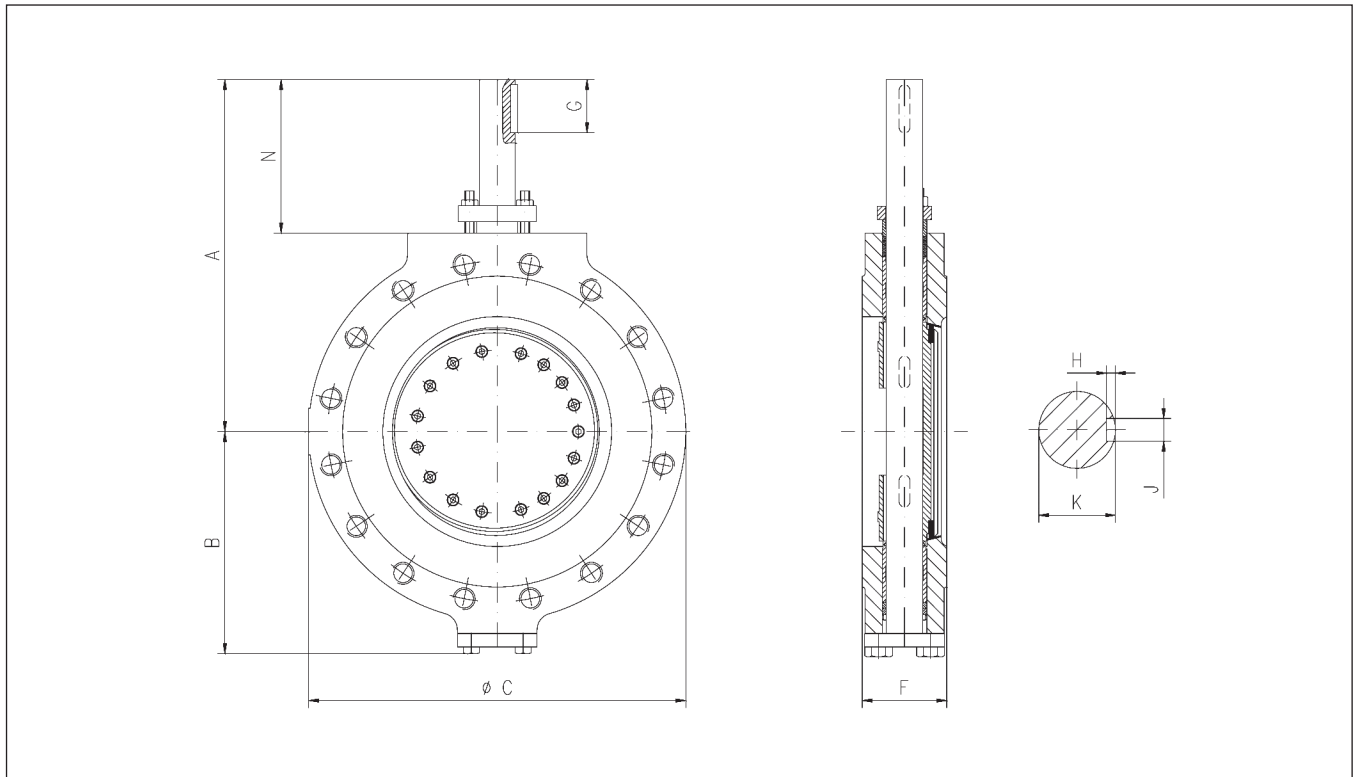
<p>Modell S1 / Einschweiß Baulänge nach DIN EN 558 R14 (DIN 3202 F4) Modell S1 / Buttweid Face to Face acc. to DIN EN 558 R14 (DIN 3202 F4)</p>	<p>Modell D1 / Doppelflansch PN10-40 Baulänge nach DIN EN 558 R13 (DIN 3202 F16) PN63/100 Baulänge nach DIN EN 558 R14 (DIN 3202 F4) Modell D1 / Double Flange PN10-40 Face to Face acc. to DIN EN 558 R13 (DIN 3202 F16) PN63/100 Face to Face acc. to DIN EN 558 R14 (DIN 3202 F4)</p>
	
<p>Nennweite DN 80 – 1500 Druckstufen PN 10/16/25/40/63/100 Size DN 80 – 1500 Pressure PN 10/16/25/40/63/100</p>	<p>Nennweite DN 50 - 1800 Druckstufen PN 10/16/25/40/63/100 Size DN 50 - 1800 Pressure PN 10/16/25/40/63/100</p>

<p>Modell I1 / Doppelflansch ANSI 150-300 Baulänge nach ISO 5752 Serie 13 ANSI 600 Baulänge nach ISO 5752 Serie 14 Modell I1 / Double Flange ANSI 150-300 Face to Face acc. to ISO 5752 Series 13 ANSI 600 Face to Face acc. to ISO 5752 Series 14</p>	<p>Modell A1 / Anflansch Baulänge nach API 609 T.3 Modell A1 / Lug Type Face to Face acc. to API 609 T.3</p>
	
<p>Nennweite 2" - 72" Druckstufen ANSI 150/300/600/900 Size 2" - 72" Pressure ANSI 150/300/600/900</p>	<p>Nennweite 2" – 36" Druckstufen ANSI 150/300/600/900 Size 2" – 36" Pressure ANSI 150/300/600/900</p>

<p>Modell B1 / Doppelflansch Baulänge nach B16.10 Modell B1 / Double Flange Face to Face acc. to B16.10</p>	<p>Modell S1 / Einschweiß Baulänge nach ISO 5752 Serie 14 Modell S1 / Buttweid Face to Face acc. to ISO 5752 Series 14</p>
	
<p>Nennweite 3" – 30" Druckstufen ANSI 150/300/600 Size 3" – 30" Pressure ANSI 150/300/600</p>	<p>Nennweite 3" – 60" Druckstufen ANSI 150/300/600 Size 3" – 60" Pressure ANSI 150/300/600</p>

# TRI-CON

MODELL / MODEL L1 (ANFLANSCH / LUG TYP EN 558 R16 / DIN 3202 K3)  
 ABMESSUNGEN UND GEWICHTE / DIMENSIONS AND WEIGHTS DN 50 – DN 900 /  
 PN 10 – 40 FREIES WELLENEUDE / BARE SHAFT



## ABMESSUNGEN / DIMENSIONS IN MM

DN Size	50 2"	65 2 1/2"	80 3"	100 4"	125 5"	150 6"	200 8"	250 10"	300 12"	350 14"	400 16"	450 18"	500 20"	600 24"	700 28"	800 32"	900 36"
A	210	231	231	242	272	290	376	417	436	528	578	628	670	757	904	978	1009
B	128	143	143	159	169	196	224	258	315	349	413	468	501	580	665	748	766
C (PN10)	165	200	200	225	250	292	345	400	452	516	575	640	670	780	910	1025	1115
C (PN16)	165	200	200	225	250	292	345	400	452	516	575	640	715	842	910	1025	1125
C (PN25)	165	200	200	225	270	292	367	440	502	567	620	685	740	842	960	1085	1185
C (PN40)	165	200	200	225	270	292	367	440	502	567	660	685	740	890	995	1140	1250
F	43	64	64	64	70	76	89	114	114	127	140	152	152	178	229	241	241
G	20	32	31	30	48	39	48	48	52	91	91	91	101	103	143	143	143
H	3	3,5	3,5	3,5	4	5	5	5	5,5	6	7	7,5	7,5	9	10	10	10
J	5	6	6	6	8	10	10	12	14	16	18	20	20	25	28	28	28
K	16	20	20	22	25	32	38	40	45	55	65	70	75	90	110	110	110
N	100	111	111	107	127	120	168	169	169	231	230	230	240	255	326	337	336

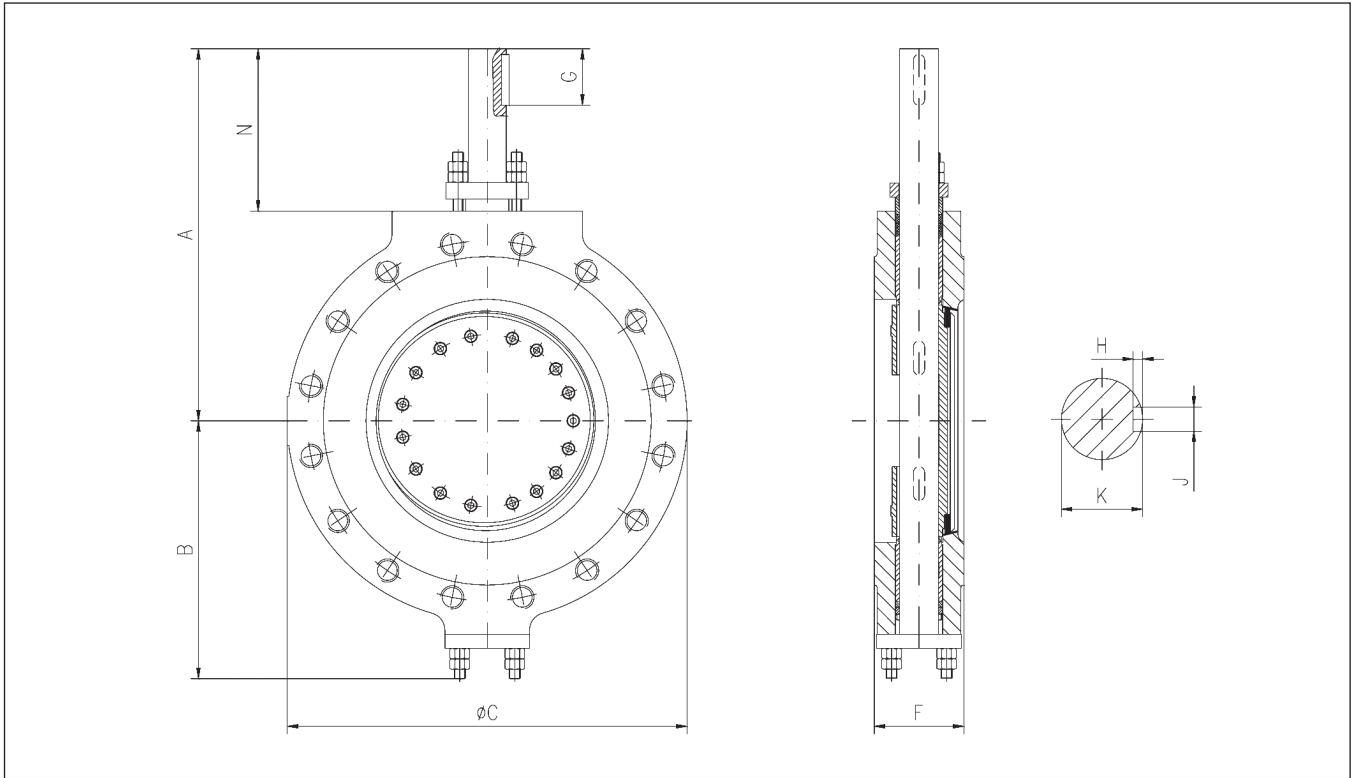
## GEWICHTE / WEIGHTS IN KG

DN Size	50 2"	65 2 1/2"	80 3"	100 4"	125 5"	150 6"	200 8"	250 10"	300 12"	350 14"	400 16"	450 18"	500 20"	600 24"	700 28"	800 32"	900 36"
PN10	9	16	16	19	23	35	58	91	109	165	230	325	374	526	950	1113	**
PN16	9	16	16	19	23	35	58	91	109	165	230	325	374	600	950	1180	1540
PN25	9	16	16	19	23	35	58	101	125	188	285	361	402	600	1011	1300	**
PN40	9	16	16	19	23	35	63	101	125	188	291	390	402	752	**	**	**

\*\* IN ABHÄNGIGKEIT VON DER SPEZIFIKATION / IN ACCORDANCE TO SPECIFICATION

# TRI-CON

MODELL / MODEL L1 (ANFLANSCH / LUG TYPE EN 558 R16 / DIN 3202 K3  
 ≤ DN 250) ABMESSUNGEN UND GEWICHTE / DIMENSIONS AND WEIGHTS  
 DN 80 – DN 600 / PN 63 FREIES WELLENEDE / BARE SHAFT



## ABMESSUNGEN / DIMENSIONS IN MM

DN Size	80 3"	100 4"	125 5"	150 6"	200 8"	250 10"	300 12"	350 14"	400 16"	500 20"	600 24"
A	252	281	317	316	435	527	550	550	663	846	893
B	163	196	231	243	280	339	347	389	451	573	605
C	215	265	295	356	415	508	559	600	686	813	*
F	64	64	70	76	89	114	140	155	178	216	*
G	53	53	53	53	93	93	103	93	113	128	163
H	3,5	4	4	5	5,5	6	6	7	9	10	12
J	6	8	8	10	14	16	16	18	25	28	36
K	20	25	25	38	45	55	55	65	90	110	135
N	132	126	132	133	210	244	250	242	263	328	371

\* ABMASSE NACH VEREINBARUNG MIT KUNDEN / DIMENSIONS PER CUSTOMER SPECIFICATION

## GEWICHTE / WEIGHTS IN KG

DN Size	80 3"	100 4"	125 5"	150 6"	200 8"	250 10"	300 12"	350 14"	400 16"	500 20"	600 24"
PN63	18	28	47	55	85	163	227	273	314	439	**

\*\* IN ABHÄNGIGKEIT VON DER SPEZIFIKATION / IN ACCORDANCE TO SPECIFICATION

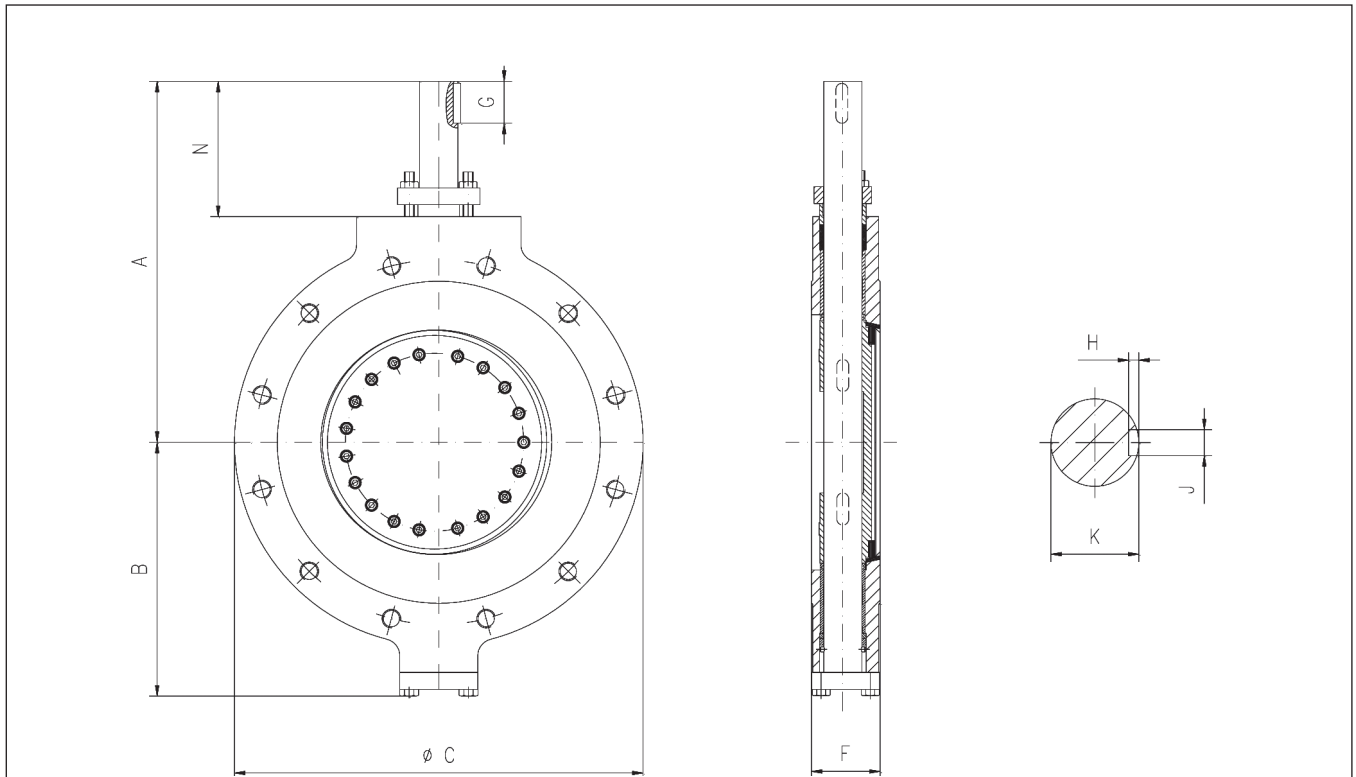
[www.eurovalve.co.uk](http://www.eurovalve.co.uk)

Eurovalve UK Limited  
 Unit 1D Campbell Way  
 ☎ (01909) 530444  
 Fax (01909) 530044



# TRI-CON

**MODELL / MODEL A1 (ANFLANSCH / LUG TYPE API 609 T.3) ABMESSUNGEN UND GEWICHTE / DIMENSIONS AND WEIGHTS 2" - 36" / ANSI 150 - 300**  
**FREIES WELLENEUDE / BARE SHAFT**



## ABMESSUNGEN / DIMENSIONS IN MM

DN Size	50 2"	80 3"	100 4"	125 5"	150 6" ANSI 150	150 6" ANSI 300	200 8" ANSI 150	200 8" ANSI 300	250 10"	300 12"	350 14"	400 16"	450 18"	500 20"	600 24"	700 28"	750 30"	800 32"	900 36"
<b>A</b>	210	231	242	272	290	290	376	376	417	436	528	578	628	670	757	904	978	978	1009
<b>B</b>	128	143	159	169	196	196	224	224	258	315	349	413	468	501	581	666	748	748	766
<b>C (ANSI150)</b>	153	190	229	254	295	-	343	-	405	482	530	597	635	700	810	928	985	1061	1169
<b>C (ANSI300)</b>	165	210	254	280	-	318	-	380	445	520	585	648	710	775	915	1036	1093	1150	1270
<b>F (ANSI150)</b>	43	48	54	58	57	-	64	-	71	81	92	102	114	127	154	229	241	241	241
<b>F (ANSI300)</b>	43	48	54	58	-	59	-	73	83	92	117	133	149	159	181	229	*	*	*
<b>G</b>	20	31	30	48	39	39	48	48	48	52	91	91	91	101	103	143	143	143	143
<b>H</b>	3	3,5	3,5	4	4	5	5	5	5	5,5	6	7	7,5	7,5	9	10	10	10	10
<b>J</b>	5	6	6	8	8	10	10	10	12	14	16	18	20	20	25	28	28	28	28
<b>K</b>	16	20	22	25	25	32	32	38	40	45	55	65	70	75	90	110	110	110	110
<b>N</b>	100	111	107	127	120	120	168	168	169	169	231	230	230	240	255	326	337	337	336

\* ABMASSE NACH VEREINBARUNG MIT KUNDEN / DIMENSIONS PER CUSTOMER SPECIFICATION

## GEWICHTE / WEIGHTS IN KG

DN Size	50 2"	80 3"	100 4"	125 5"	150 6"	200 8"	250 10"	300 12"	350 14"	400 16"	450 18"	500 20"	600 24"	700 28"	750 30"	800 32"	900 36"
<b>ANSI150</b>	8	12	17	23	30	44	64	101	142	202	261	332	526	**	1380	**	**
<b>ANSI300</b>	8	13	20	23	34	56	84	123	197	279	391	471	747	1210	**	**	**

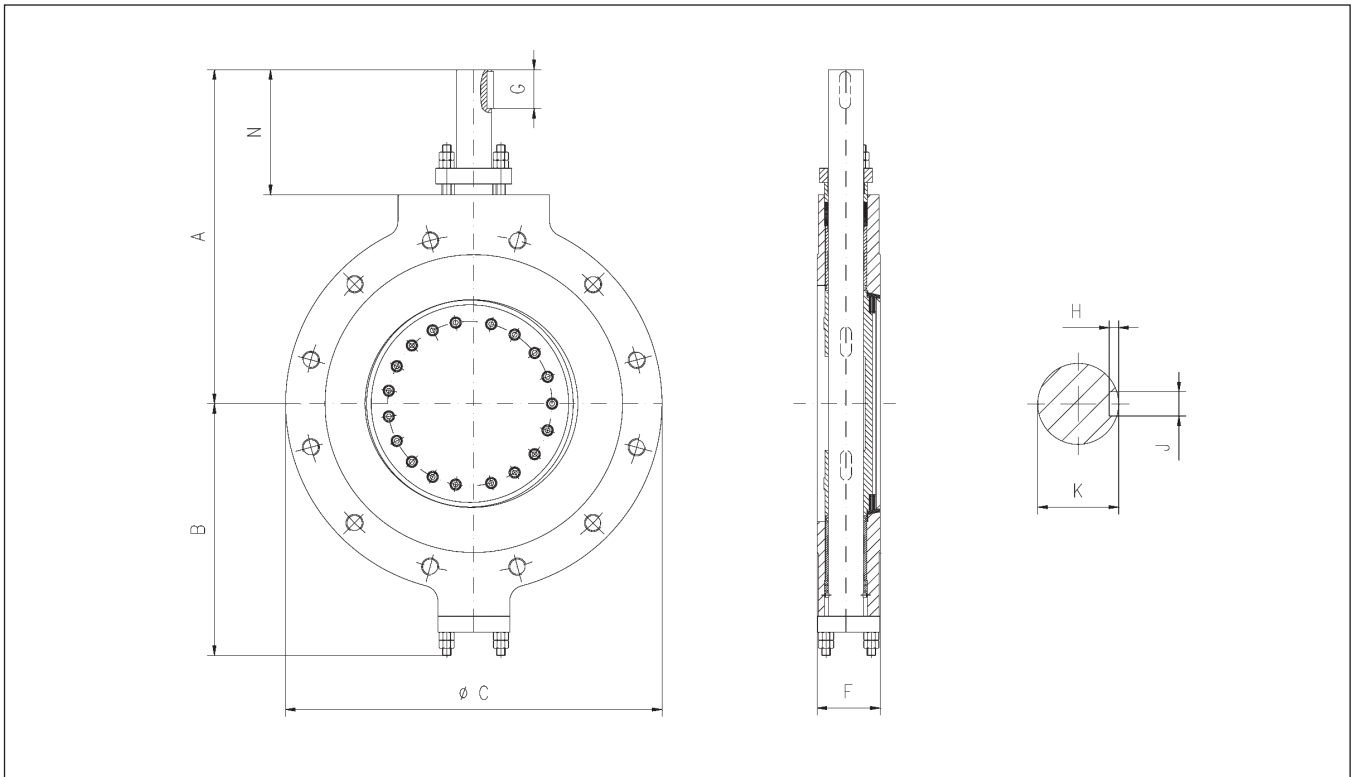
\*\* IN ABHÄNGIGKEIT VON DER SPEZIFIKATION / IN ACCORDANCE TO SPECIFICATION

# TRI-CON

MODELL / MODEL A1 (ANFLANSCH / LUG TYPE API 609 T.3)

ABMESSUNGEN UND GEWICHTE / DIMENSIONS AND WEIGHTS 3" – 36" / ANSI 600

FREIES WELLENEUDE / BARE SHAFT



## ABMESSUNGEN / DIMENSIONS IN MM

DN Size	80 3"	100 4"	150 6"	200 8"	250 10"	300 12"	350 14"	400 16"	450 18"	500 20"	600 24"	700 28"	750 30"	900 36"
A	252	281	316	435	527	551	550	663	697	846	893	1101	1091	1295
B	163	196	243	280	339	347	389	451	501	573	605	745	745	868
C	210	273	356	419	508	559	604	686	743	813	940	1074	1131	1315
F	54	64	78	102	117	140	155	178	200	216	232	300	300	350
G	53	53	53	93	93	103	93	113	113	128	163	183	163	223
H	3,5	4	5	5,5	6	6	7	9	9	10	12	13	12	15
J	6	8	10	14	16	16	18	25	25	28	36	40	36	45
K	20	25	38	45	55	55	65	90	90	110	135	160	140	200
N	132	126	133	210	244	251	242	263	265	325	371	421	413	465

## GEWICHTE / WEIGHTS IN KG

DN Size	80 3"	100 4"	150 6"	200 8"	250 10"	300 12"	350 14"	400 16"	450 18"	500 20"	600 24"	700 28"	750 30"	900 36"
ANSI600	19	30	58	91	159	215	273	472	570	810	1080	1510	1710	2420

[www.eurovalve.co.uk](http://www.eurovalve.co.uk)

Eurovalve UK Limited  
 Unit 1D Campbell Way  
 ☎ (01909) 530444  
 Fax (01909) 530044

Designation	Size	Pressure class	Body & Disc material	Shaft material	Packing	Lamination material	Execution	Operation
<b>A1 = API 609 Lug Type Table 2</b>	0050 = DN 50 = 2"	A = PN 10	A = GP240GH / P265GH	A = 1.4057 [SS431]	1 = Graphite	1 = Stainless Steel / Graphite	A = Standard	A = Bare Shaft
<b>B1 = B16.10 Gate Valve Double Flange</b>	0065 = DN 65 = 2.5"	B = PN 16	B = 1.4552 [CF8C]	B = 1.4571 [SS316Ti]	2 = PTFE	2 = Stainless Steel Solid Laminate	B = Inconel Seat	E = Electrical Actuator
<b>I1 = ISO 5752 Double Flange</b>	0080 = DN 80 = 3"	C = PN 25	C = 1.4571 [SS316Ti]	C = 1.4980 [AISI660]	3 = Kalrez	3 = Stainless Steel / PTFE	C = Flange with Groove	G = Gear
<b>W1 = Wafer type API 609</b>	0100 = DN 100 = 4"	D = PN 40	D = 1.4408	D = Duplex	4 = Special	4 = Hastelloy / Graphite	D = High Cycle Bearing	H = Hydraulic Actuator
<b>D1 = EN 558 R13/R14 (DIN 3202 / F16 / F4) Double Flange</b>	0125 = DN 125 = 5"	E = PN 63	E = 1.4301 [SS304]	E = 1.4301 [SS304]	5 = Graphite / Live-Loading	5 = Special	E = Sealed Bearing	I = Gear with Switch Box
<b>F1 = EN 558 R14 (DIN 3202 / F4) Double Flange</b>	0150 = DN 150 = 6"	F = PN 100	F = 1.4307 [SS304L]	F = 1.4307 [SS304L]	6 = PTFE / Live-Loading	6 = Duplex / Graphite	F = Stellite Seat	M = Mounting Bracket
<b>L1 = EN 558 R16 (DIN 3202 / K3) Lug type</b>	0200 = DN 200 = 8"	G = PN 160	G = 1.7357 [WC6]	G = 1.4923	7 = O2-Graphite	7 = Inconel / O2-Graphite	G = Blow out proof shaft acc. API 609 for DIN Valves	P = Pneumatic Actuator
<b>S1 = EN 558 R14 (DIN 3202 / F4) Buttweld / Fabricated</b>	0250 = DN 250 = 10"	H = PN 250	H = Hastelloy	H = Hastelloy	8 = O2-Graphite / Live-Loading	8 = Hastelloy	H = Combination E + F	Q = Electrohydraulic Actuator
<b>S2 = EN 558 R14 (DIN 3202 / F4) Buttweld / Casting</b>	0300 = DN 300 = 12"	I = PN 6	I = Inconel	I = Inconel	9 = EPAGRAPH	9 = Duplex	I = Combination D + F	S = Special
<b>WD = EN 558 R16 (DIN 3202 / K3) Wafer Type</b>	0350 = DN 350 = 14"	J = JIS Standard	J = Duplex	J = 1.4401 / 1.4404 [SS316/316L]		0 = Inconel	J = Combination D + F & HT-Bolting	L = Low Temperature Gear
<b>WS = EN 558 R20/R25 (DIN 3202 / K1/K2) Wafer Type</b>	0375 = DN 375 = 15"	X = ANSI 150	K = 1.4401 / 1.4404 [SS316/316L]	K = 1.4541 [SS321]		A = Monel / O2-Graphite	K = Combination D + F + HT-Bolting + Extension	T = High Temperature Gear
<b>LS = EN 558 R20/R25 (DIN 3202 / K1/K2) Lug Type</b>	0400 = DN 400 = 16"	Y = ANSI 300	L = 1.6220 / P355NL	M = Monel K500		B = Bronze / Graphite	L = Body Extension	O = O2- Gear
<b>DB = Double Block and Bleed</b>	0450 = DN 450 = 18"	Z = ANSI 600	M = Monel	N = Nitronics 50		C = Monel	M = Sealed bearing + NACE	N = Offshore Gear
<b>CF = EN 558 R14 (DIN 3202 / F4) Flanged Check Valve</b>	0500 = DN 500 = 20"	W = ANSI 900	N = CS Body & SS Disc	P = 17-4 PH / 1.4542		D = Superduplex / Graphite	N = NACE	R = Gear with Padlock Flange
<b>CS = EN 558 R14 (DIN 3202 / F4) Buttweld Check Valve</b>	0600 = DN 600 = 24"	V = ANSI 1500	O = O2 Brass	Q = Superduplex			O = Steam Jacket	
<b>FA = EN 558 R14 Double Flange with ANSI Connection</b>	0650 = DN 650 = 26"	S = Special	P = C95800/C95500	U = 1.4536-39 [904/904L]			P = Sealed bearing + Steam Jacket	
	0700 = DN 700 = 28"		Q = Superduplex	S = Special			Q = Sealed bearing + Steam Jacket + NACE	
	0750 = DN 750 = 30"		R = 16Mo3 / 1.5415 / G20Mo5 / 1.5419				R = Flange with Recess	
	0800 = DN 800 = 32"		S = Special				S = Special	
	0900 = DN 900 = 36"		T = 1.4827				T = HT-Bolting	
	1000 = DN 1000 = 40"		U = 1.4859				U = Combination L & T	
	1050 = DN 1050 = 42"		V = SS / O2 Brass				V = Shaft Extension	
	.		W = WC9				W = Combination T + V	
			X = LCB				X = Combination L + N + T	
			Y = CF8M					
			Z = WCB / A516Gr.70					
			1 = 1.4536-39 [904/904L]					
			3 = CF3					
			4 = CF3M					
			5 = C5					
	2200 = DN 2200 = 88"		6 = C12					
			8 = CF8					

# TRI-CON

## MODELL / MODEL A1 (ANFLANSCH / LUG TYPE API 609 T.3) GEWINDEABMESSUNGEN / THREAD DIMENSIONS DN 80 – DN 600 ANSI150/300/600

DN Size	ANSI	Baulänge Face to face	Gewinde / Thread Pro Seite / per side	Gewinde im Spindelbereich Thread in shaft area Pro Seite / per side
80 / 3"	150	48	4 x 5/8" -11UNC / 18mm tief / deep	-
	300	48	6 x 3/4" -10UNC / 18mm tief / deep	2 x 3/4" -10UNC / 11mm tief / deep
	600	54	6 x 3/4" -10UNC / 20mm tief / deep	2 x 3/4" -10UNC / 19mm tief / deep
100 / 4"	150	54	8 x 5/8" -11UNC / 20mm tief / deep	-
	300	54	8 x 3/4" -10UNC / 22mm tief / deep	-
	600	64	8 x 7/8" -9UNC / 21mm tief / deep	-
150 / 6"	150	57	8 x 3/4" -10UNC / 22mm tief / deep	-
	300	59	10 x 3/4" -10UNC / 22mm tief / deep	2 x 3/4" -10UNC / 13mm tief / deep
	600	78	10 x 1" -8UNC / 32mm tief / deep	2 x 1" -8UNC / 14mm tief / deep
200 / 8"	150	64	8 x 3/4" -10UNC / 25mm tief / deep	-
	300	73	12 x 7/8" -9UNC / 27mm tief / deep	-
	600	102	10 x 1 1/8" -8UN / 35mm tief / deep	2 x 1 1/8" -8UN / 30mm tief / deep
250 / 10"	150	71	12 x 7/8" -9UNC / 30mm tief / deep	-
	300	83	12 x 1" -8UNC / 30mm tief / deep	4 x 1" -8UNC / 26mm tief / deep
	600	117	12 x 1 1/4" -8UN / 47mm tief / deep	4 x 1 1/4" -8UN / 26mm tief / deep
300 / 12"	150	81	12 x 7/8" -9UNC / 34mm tief / deep	-
	300	92	12 x 1 1/8" -8UN / 40mm tief / deep	4 x 1 1/8" -8UN / 33mm tief / deep
	600	140	16 x 1 1/4" -8UN / 48mm tief / deep	4 x 1 1/4" -8UN / 32mm tief / deep
350 / 14"	150	92	12 x 1" -8UNC / 40mm tief / deep	-
	300	117	16 x 1 1/8" -8UN / 43mm tief / deep	4 x 1 1/8" -8UN / 30mm tief / deep
	600	155	16 x 1 3/8" -8UN / 60mm tief / deep	4 x 1 3/8" -8UN / 24mm tief / deep
400 / 16"	150	102	12 x 1" -8UNC / 40mm tief / deep	4 x 1" -8UNC / 28mm tief / deep
	300	133	16 x 1 1/4" -8UN / 48mm tief / deep	4 x 1 1/4" -8UN / 35mm tief / deep
	600	178	16 x 1 1/2" -8UN / 58mm tief / deep	4 x 1 1/2" -8UN / 22mm tief / deep
450 / 18"	150	114	12 x 1 1/8" -8UN / 43mm tief / deep	4 x 1 1/8" -8UN / 34mm tief / deep
	300	149	20 x 1 1/4" -8UN / 48mm tief / deep	4 x 1 1/4" -8UN / 26mm tief / deep
	600	200	16 x 1 5/8" -8UN / 65mm tief / deep	4 x 1 5/8" -8UN / 29mm tief / deep
500 / 20"	150	127	16 x 1 1/8" -8UN / 43mm tief / deep	4 x 1 1/8" -8UN / 26mm tief / deep
	300	159	20 x 1 1/4" -8UN / 48mm tief / deep	4 x 1 1/4" -8UN / 30mm tief / deep
	600	216	20 x 1 5/8" -8UN / 65mm tief / deep	4 x 1 5/8" -8UN / 24mm tief / deep
600 / 24"	150	154	16 x 1 1/4" -8UN / 55mm tief / deep	4 x 1 1/4" -8UN / 25mm tief / deep
	300	181	20 x 1 1/2" -8UN / 58mm tief / deep	4 x 1 1/2" -8UN / 40mm tief / deep

# TRI-CON

MODELL / MODEL L1 (ANFLANSCH / LUG TYPE DIN3202 K3 / EN 558 R16)

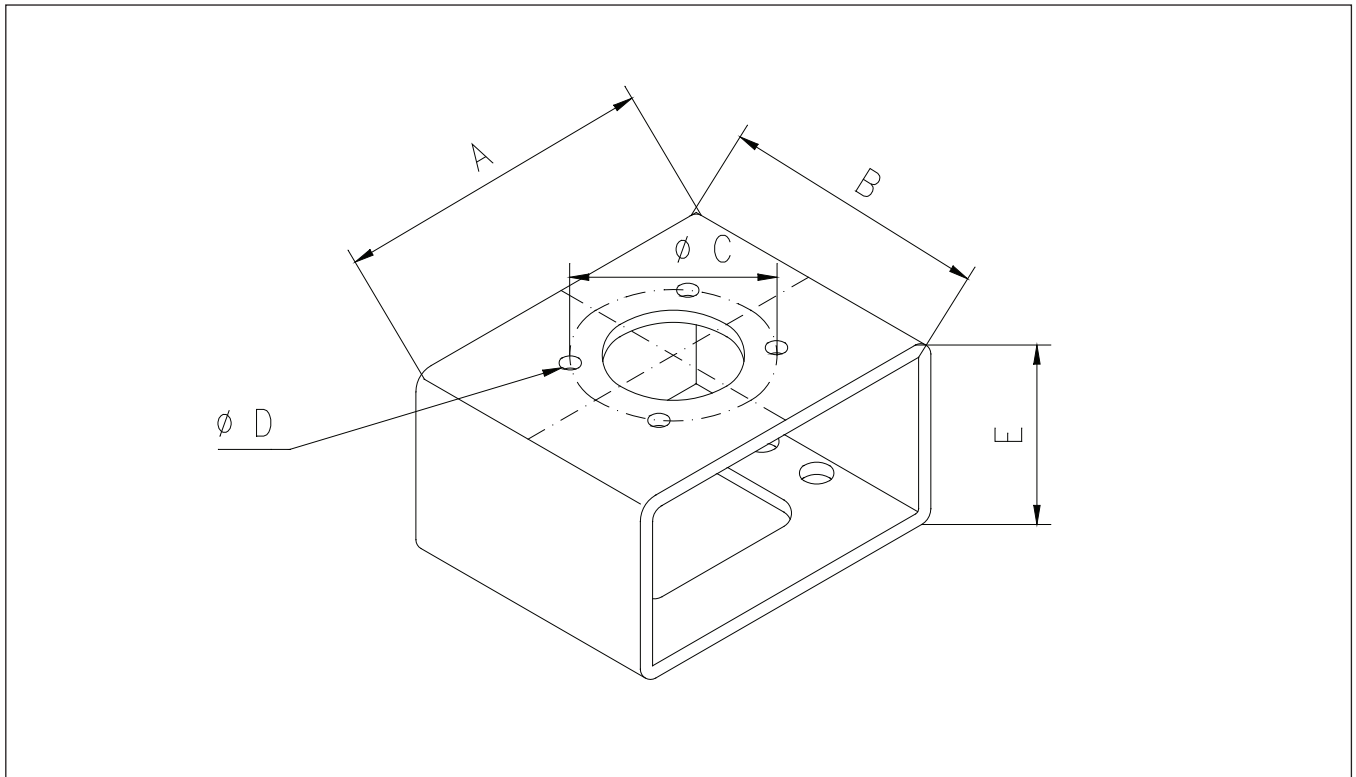
GEWINDEABMESSUNGEN / THREAD DIMENSIONS

DN 50 – DN600 PN 10 - 40

DN Size	PN	Baulänge Face to face	Gewinde / Thread Pro Seite / per side	Gewinde im Spindelbereich Thread in shaft area Pro Seite / per side
50 / 2"	10-40	43	4 x M16 / 18 tief / deep	-
65 / 2,5"	10-40	64	6 x M16 / 24 tief / deep	2 x M16 / 13 tief / deep
80 / 3"	10-40	64	6 x M16 / 24 tief / deep	2 x M16 / 16 tief / deep
100 / 4"	10/16	64	8 x M16 / 24 tief / deep	-
	25/40	64	8 x M20 / 25 tief / deep	-
125 / 5"	10/16	70	8 x M16 / 24 tief / deep	-
	25/40	70	8 x M24 / 28 tief / deep	-
150 / 6"	10/16	76	8 x M20 / 30 tief / deep	-
	25/40	76	8 x M24 / 30 tief / deep	-
200 / 8"	10	89	8 x M20 / 30 tief / deep	-
	16	89	12 x M20 / 30 tief / deep	-
	25	89	12 x M24 / 36 tief / deep	-
	40	89	12 x M27 / 40 tief / deep	-
250 / 10"	10	114	12 x M20 / 30 tief / deep	-
	16	114	12 x M24 / 36 tief / deep	-
	25	114	12 x M27 / 41 tief / deep	-
	40	114	12 x M30 / 45 tief / deep	-
300 / 12"	10	114	12 x M20 / 30 tief / deep	-
	16	114	12 x M24 / 36 tief / deep	-
	25	114	12 x M27 / 46 tief / deep	4 x M27 / 37 tief / deep
	40	114	12 x M30 / 45 tief / deep	4 x M30 / 35 tief / deep
350 / 14"	10	127	16 x M20 / 30 tief / deep	-
	16	127	12 x M24 / 47 tief / deep	4 x M24 / 37 tief / deep
	25	127	12 x M30 / 47 tief / deep	4 x M30 / 39 tief / deep
	40	127	12 x M33 / 47 tief / deep	4 x M33 / 40 tief / deep
400 / 16"	10	140	12 x M24 / 52 tief / deep	4 x M24 / 36 tief / deep
	16	140	12 x M27 / 52 tief / deep	4 x M27 / 40 tief / deep
	25	140	12 x M33 / 52 tief / deep	4x M33 / 42 tief / deep
	40	140	12 x M36 / 57 tief / deep	4 x M36 / 50 tief / deep
450 / 18"	10	152	16 x M24 / 36 tief / deep	4 x M24 / 29 tief / deep
	16	152	16 x M27 / 41 tief / deep	4 x M27 / 33 tief / deep
	25	152	16 x M33 / 50 tief / deep	4 x M33 / 26 tief / deep
	40	152	16 x M36 / 54 tief / deep	4 x M36 / 24 tief / deep
500 / 20"	10	152	16 x M24 / 36 tief / deep	4 x M24 / 32 tief / deep
	16	152	16 x M30 / 45 tief / deep	4 x M30 / 32 tief / deep
	25	152	16 x M33 / 50 tief / deep	4 x M33 / 32 tief / deep
	40	152	16 x M39 / 59 tief / deep	4 x M39 / 30 tief / deep
600 / 24"	10	178	16 x M27 / 50 tief / deep	4 x M27 / 35 tief / deep
	16	178	16 x M33 / 50 tief / deep	4 x M33 / 48 tief / deep
	25	178	16 x M36 / 55 tief / deep	4 x M36 / 33 tief / deep
	40	178	16 x M45 / 68 tief / deep	4 x M45 / 41 tief / deep

# TRI-CON

## F - Anschluss Montagebrücke / F - Connection Mounting Bracket



### ABMESSUNGEN / DIMENSIONS IN MM

DN / SIZE 50 2"	F 05	F 07	F 10	F 12
A	160	160	160	160
B	100	100	120	120
C	50	70	102	125
D	7	9	11	13
E	80	80	80	80

DN / SIZE 65 - 125 2,5" - 5"	F 07	F 10	F 12	F 14
A	200	200	200	200
B	100	120	120	150
C	70	102	125	140
D	9	11	13	17
E	80	80	80	80

DN / SIZE 150 6"	F 10	F 12	F 14	F 16
A	200	200	200	200
B	120	120	150	170
C	102	125	140	165
D	11	13	17	21
E	80	80	80	80

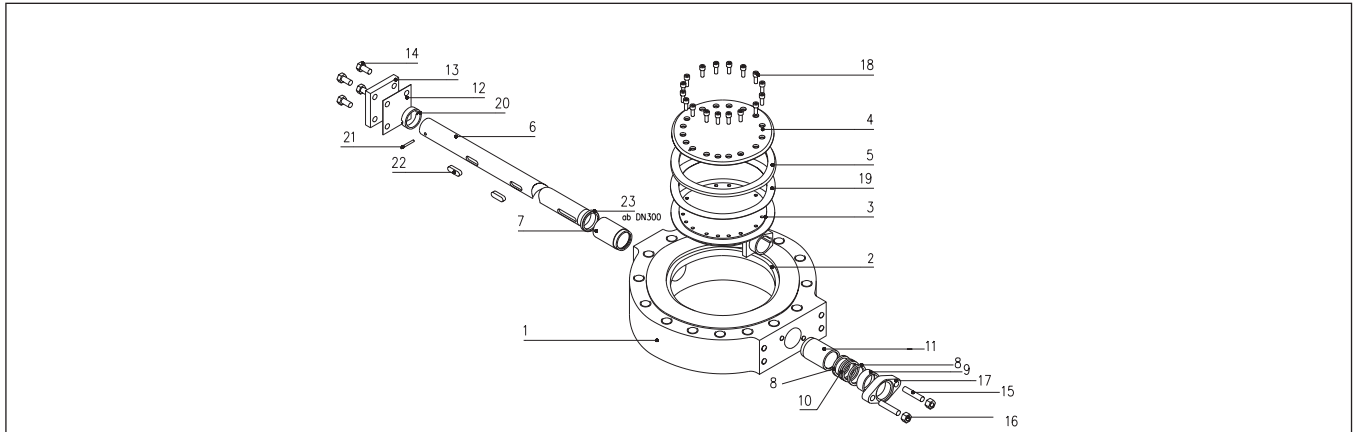
DN / SIZE 200 - 300 8" - 12"	F 10	F 12	F 14	F 16
A	220	220	220	220
B	200	200	200	200
C	102	125	140	165
D	11	13	17	21
E	120	120	120	120

DN / SIZE 350 - 600 14" - 24"	F 14	F 16	F 25	F 30
A	300	300	300	400
B	230	230	300	400
C	140	165	254	298
D	17	21	8 x 17	8 x 21
E	150	150	150	200

DN / SIZE 700 - 900 28" - 36"	F 30	F 35
A	400	470
B	400	420
C	298	356
D	8 x 21	8 x 32
E	200	200

# TRI-CON

## STANDARDWERKSTOFFE / MATERIALS DIN

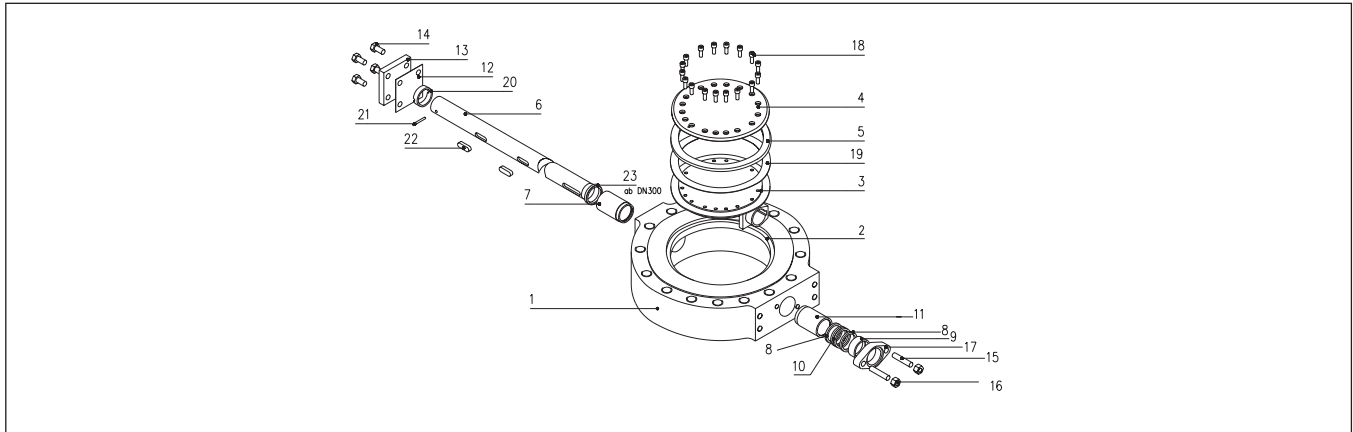


Pos.	Bauteil	Stahl Ausführung	Edelstahl Ausführung
1	Gehäuse	GP240GH / P265GH	1.4552 / 1.4571 / 1.4408
2	Sitz (Optional)	1.4571 [Stellite]	1.4552 / 1.4571 / 1.4408 [Stellite]
3	Scheibe	GP240GH / C 22.8	1.4552 / 1.4571 / 1.4408
4	Klemmring	P265GH	1.4571
5	Lamellendichtung (Optional)	1.4571 / Graphit 1.4571 / Volledelstahl	1.4571 / Graphit 1.4571 / Volledelstahl
6	Welle	1.4057	1.4057
7	Untere Lagerbuchse (Optional)	1.4305 hartverchromt (spezielle Lagervorabdichtung)	1.4305 hartverchromt (spezielle Lagervorabdichtung)
8	Kammerungsring	Kohlefasergeflecht	Kohlefasergeflecht
9	Stopfbuchse	1.4305	1.4571
10	Packungsring	Graphit	Graphit
11	Obere Lagerbuchse (Optional)	1.4305 hartverchromt (spezielle Lagervorabdichtung)	1.4305 hartverchromt (spezielle Lagervorabdichtung)
12	Deckeldichtung	Graphit	Graphit
13	Deckel	P265GH	1.4571
14	Deckelschrauben	A2 - 70	A4 - 70
15	Gewindebolzen	A2 - 70	A4 - 70
16	Mutter	A2 - 70	A4 - 70
17	Stopfbuchsbrille	P265GH / 1.4408	1.4408 / 1.4571
18	Klemmringschraube	A2 - 70	A4 - 70
19	Abschlussdichtung	Graphit	Graphit
20	Haltering	1.4112 gehärtet	1.4112 gehärtet
21	Stift	1.4571	1.4571
22	Passfeder	1.4571	1.4571
23	Gleitring	1.4112 gehärtet	1.4571

Pos.	Part	Carbon Steel Design	Stainless Steel Design
1	Body	GP240GH / P265GH	1.4552 / 1.4571 / 1.4408
2	Body Seat (Optional)	1.4571 [Stellite]	1.4552 / 1.4571 / 1.4408 [Stellite]
3	Disc	GP240GH / C 22.8	1.4552 / 1.4571 / 1.4408
4	Clamp Ring	P265GH	1.4571
5	Laminated Seal (Optional)	1.4571 / Graphite [1.4571 / solid lamination]	1.4571 / Graphite [1.4571 / solid lamination]
6	Shaft	1.4057	1.4057
7	Lower Bearing Bush (Optional)	1.4305 hard chromed (zero leakage bearing)	1.4305 hard chromed (zero leakage bearing)
8	Gland Packing	Carbon Fibre	Carbon Fibre
9	Gland Follower	1.4305	1.4571
10	Gland Packing	Graphite	Graphite
11	Upper Bearing Bush (Optional)	1.4305 hard chromed (zero leakage bearing)	1.4305 hard chromed (zero leakage bearing)
12	Cover Seal	Graphite	Graphite
13	Cover	P265GH	1.4571
14	Cover Screw	A2 - 70	A4 - 70
15	Gland Adjust. Stud	A2 - 70	A4 - 70
16	Gland Adjust. Nut	A2 - 70	A4 - 70
17	Gland Plate	P265GH / 1.4408	1.4408 / 1.4571
18	Clamp Ring Screw	A2 - 70	A4 - 70
19	Gasket	Graphite	Graphite
20	Shaft Retainer	1.4112 hardened	1.4112 hardened
21	Cross Pin	1.4571	1.4571
22	Disc Drive Key	1.4571	1.4571
23	Thrust Ring	1.4112 hardened	1.4571

# TRI-CON

## STANDARDWERKSTOFFE / MATERIALS ANSI



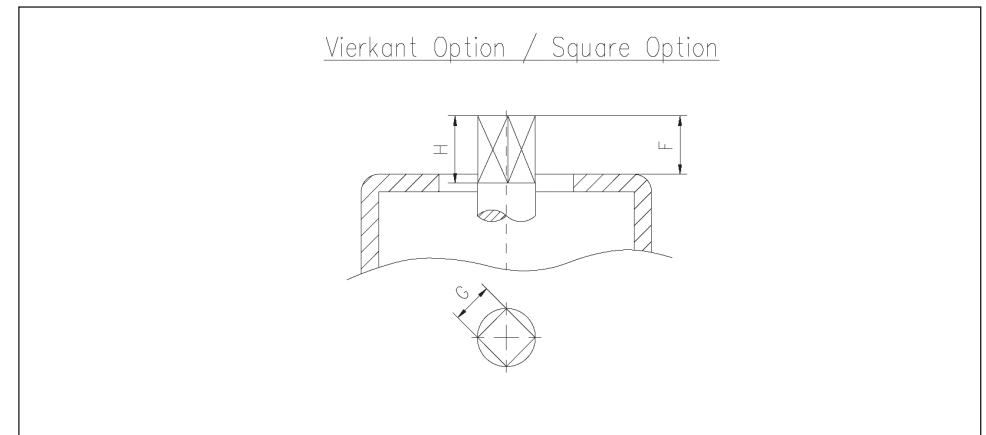
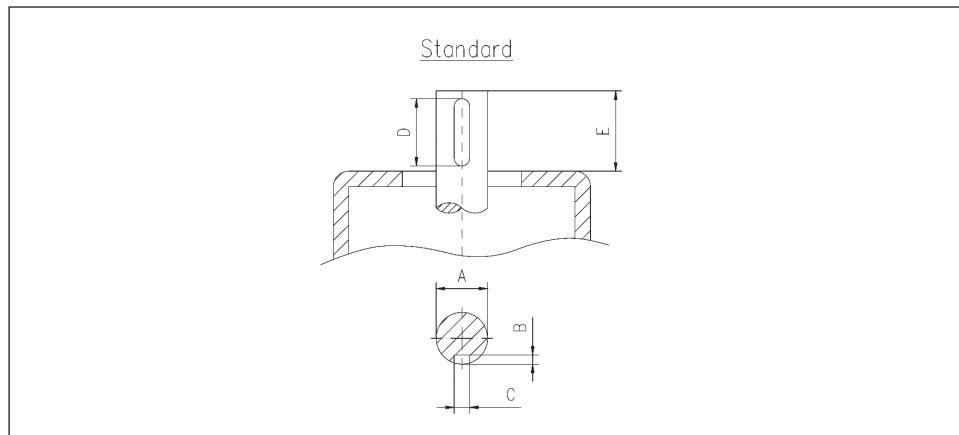
Pos.	Bauteil	Stahl Ausführung	Edelstahl Ausführung
1	Gehäuse	ASTM A216 WCB / A516 Gr. 70	ASTM A351 CF8M / CF8C / A276 Gr. 316 Ti
2	Sitz (Optional)	ASTM A276 Gr. 316 Ti (Stellite)	ASTM A351 CF8M / CF8C / A276 Gr. 316 Ti (Stellite)
3	Scheibe	ASTM A216 WCB / A105	ASTM A351 CF8M / A276 Gr. 316 Ti
4	Klemmring	ASTM A516 Gr. 60	ASTM A276 Gr. 316 Ti
5	Lamellendichtung (Optional)	ASTM A276 Gr. 316 Ti / Graphit Volledelstahl	ASTM A276 Gr. 316 Ti / Graphit Volledelstahl
6	Welle	ASTM A276 Type 431	ASTM A276 Type 431
7	Untere Lagerbuchse (Optional)	ASTM A582 Type 303 hartverchromt (spezielle Lagervorabdichtung)	ASTM A582 Type 303 hartverchromt (spezielle Lagervorabdichtung)
8	Kammerungsring	Kohlefasergeflecht	Kohlefasergeflecht
9	Stopfbuchse	ASTM A582 Type 303	ASTM A276 Gr. 316 Ti
10	Packungsring	Graphit	Graphit
11	Obere Lagerbuchse (Optional)	ASTM A582 Type 303 hartverchromt (spezielle Lagervorabdichtung)	ASTM A582 Type 303 hartverchromt (spezielle Lagervorabdichtung)
12	Deckeldichtung	Graphit	Graphit
13	Deckel	ASTM A216 WCB / A516 Gr. 60	ASTM A351 CF8M / A276 Gr. 316 Ti
14	Deckelschrauben	ASTM A193 Gr. B8	ASTM A193 Gr. B8
15	Gewindebolzen	ASTM A193 Gr. B8	ASTM A193 Gr. B8
16	Mutter	ASTM A194 Gr. 8	ASTM A194 Gr. 8
17	Stopfbuchsbrille	ASTM A216 WCB / A516 Gr. 60 / CF8M	ASTM A351 CF8M / A276 Gr. 316Ti
18	Klemmringschraube	ASTM A193 Gr. B8	ASTM A193 Gr. B8
19	Abschlussdichtung	Graphit	Graphit
20	Haltering	ASTM A582 Type 303 hartverchromt / ASTM A276 Type 440 B gehärtet	ASTM A276 Gr. 316 Ti hartverchromt / ASTM A276 Type 440 B gehärtet
21	Stift	ASTM A276 Gr. 316 Ti	ASTM A276 Gr. 316 Ti
22	Passfeder	ASTM A276 Gr. 316 Ti	ASTM A276 Gr. 316 Ti
23	Gleitring	ASTM A276 Type 440 B gehärtet	ASTM A276 Gr. 316 Ti

Pos.	Part	Carbon Steel Design	Stainless Steel Design
1	Body	ASTM A216 WCB / A516 Gr. 70	ASTM A351 CF8M / CF8C / A276 Gr. 316 Ti
2	Body Seat (Optional)	ASTM A276 Gr. 316 Ti (Stellite)	ASTM A351 CF8M / CF8C / A276 Gr. 316 Ti (Stellite)
3	Disc	ASTM A216 WCB / A105	ASTM A351 CF8M / A276 Gr. 316 Ti
4	Clamp Ring	ASTM A516 Gr. 60	ASTM A276 Gr. 316 Ti
5	Laminated Seal (Optional)	ASTM A276 Gr. 316 Ti / Graphite (solid lamination)	ASTM A276 Gr. 316 Ti / Graphite (solid lamination)
6	Shaft	ASTM A276 Type 431	ASTM A276 Type 431
7	Lower Bearing Bush (Optional)	ASTM A582 Type 303 hard chromed (zero leakage bearing)	ASTM A582 Type 303 hard chromed (zero leakage bearing)
8	Gland Packing	Carbon Fibre	Carbon Fibre
9	Gland Follower	ASTM A582 Type 303	ASTM A276 Gr. 316 Ti
10	Gland Packing	Graphite	Graphite
11	Upper Bearing Bush (Optional)	ASTM A582 Type 303 hard chromed (zero leakage bearing)	ASTM A582 Type 303 hard chromed (zero leakage bearing)
12	Cover Seal	Graphite	Graphite
13	Cover	ASTM A216 WCB / A516 Gr. 60	ASTM A351 CF8M / A276 Gr. 316 Ti
14	Cover Screw	ASTM A193 Gr. B8	ASTM A193 Gr. B8
15	Gland Adjust. Stud	ASTM A193 Gr. B8	ASTM A193 Gr. B8
16	Gland Adjust. Nut	ASTM A194 Gr. 8	ASTM A194 Gr. 8
17	Gland Plate	ASTM A216 WCB / A516 Gr. 60 / CF8M	ASTM A351 CF8M / A276 Gr. 316Ti
18	Clamp Ring Screw	ASTM A193 Gr. B8	ASTM A193 Gr. B8
19	Gasket	Graphite	Graphite
20	Shaft Retainer	ASTM A582 Type 303 hard chromed / ASTM A276 Type 440 B hardened	ASTM A276 Gr. 316 Ti hard chromed / ASTM A276 Type 440 B hardened
21	Cross Pin	ASTM A276 Gr. 316 Ti	ASTM A276 Gr. 316 Ti
22	Disc Drive Key	ASTM A276 Gr. 316 Ti	ASTM A276 Gr. 316 Ti
23	Thrust Ring	ASTM A276 Type 440 B hardened	ASTM A276 Gr. 316 Ti



## MÖGLICHE WELLENENDEN / POSSIBLE SHAFT ENDS PN 10 – 40 / ANSI 150 - 300

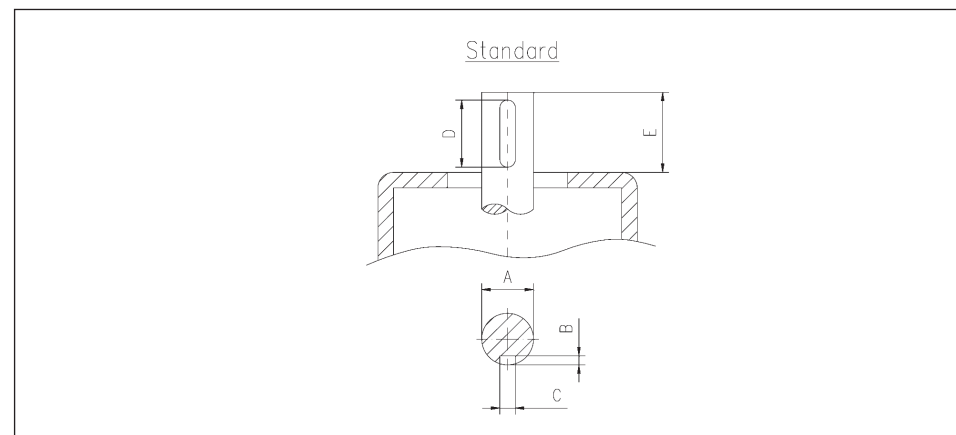
DN / Size	50 2"	65 2 1/2"	80 3"	100 4"	125 5"	150 6"	A1 150 / 6" ANSI 150	200 8"	A1 200 / 8" ANSI 150	250 10"	300 12"	350 14"	400 16"	450 18"	500 20"	600 24"	700 28"	750 30"	800 32"	900 36"
<b>A</b>	16	20	20	22	25	32	25	38	32	40	45	55	65	70	75	90	110	110	110	110
<b>B</b>	3	3,5	3,5	3,5	4	5	4	5	5	5	5,5	6	7	7,5	7,5	9	10	10	10	10
<b>C</b>	5	6	6	6	8	10	8	10	10	12	14	16	18	20	20	25	28	28	28	28
<b>D</b>	18	28	28	28	45	36	36	45	45	45	50	90	90	90	100	100	140	140	140	140
<b>E</b>	20	31	31	27	47	40	40	48	48	49	49	81	80	80	90	105	129	140	140	139
<b>F</b>	20	20	20	20	25	27	-	29	-	29	40	-	-	-	-	-	-	-	-	-
<b>G</b>	14	14	14	17	17	22	-	27	-	27	32	-	-	-	-	-	-	-	-	-
<b>H</b>	20	20	20	20	27	28	-	30	-	30	40	-	-	-	-	-	-	-	-	-



# TRI-CON

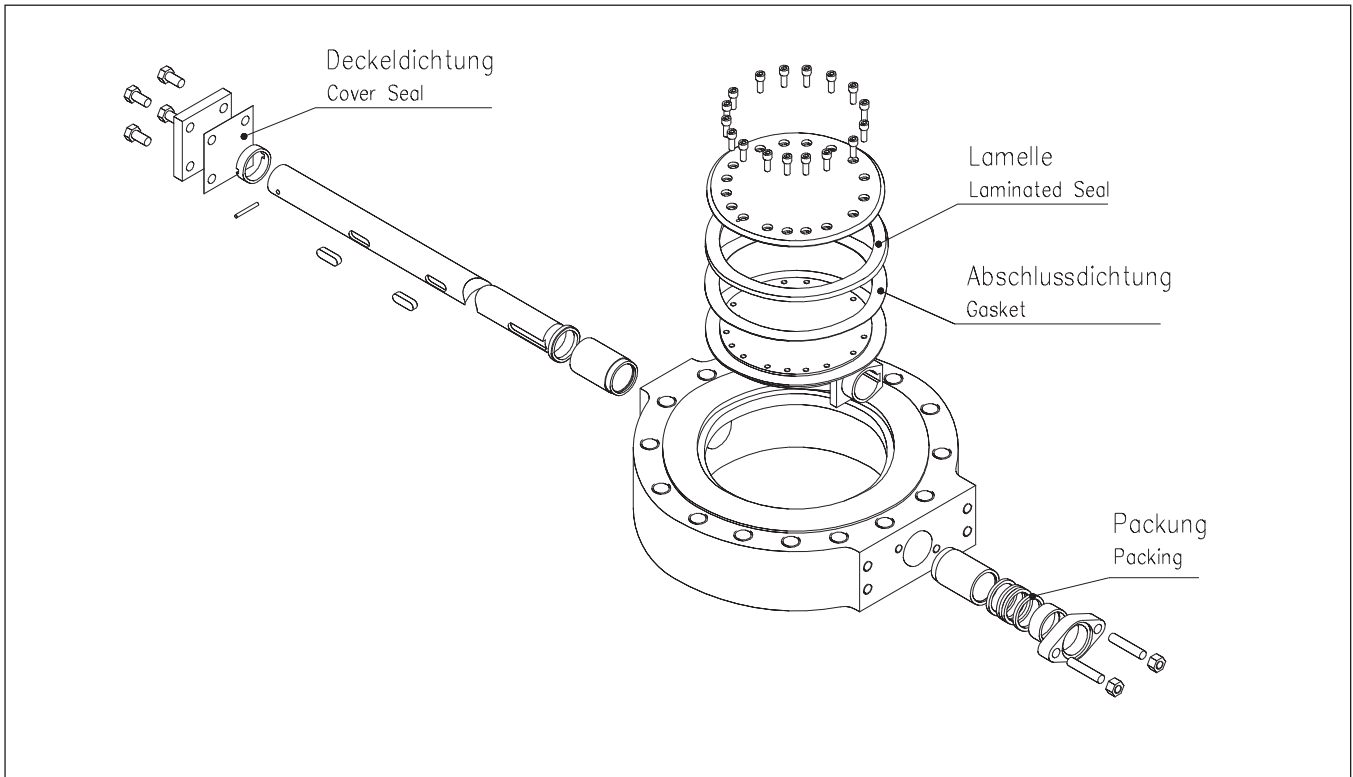
## WELLENENDEN / BARE SHAFT PN 63 / PN 100 / ANSI 600

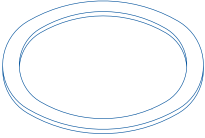
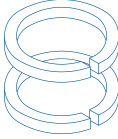
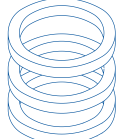
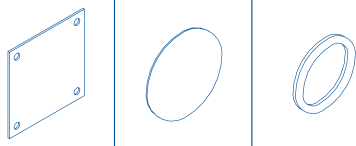
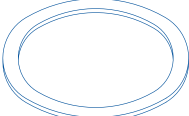
DN / Size	80 3"	100 4"	125 5"	150 6"	200 8"	250 10"	300 12"	350 14"	400 16"	450 18"	500 20"	600 24"	700 28"	750 30"	900 36"
<b>A</b>	20	25	25	38	45	55	55	65	90	90	110	135	160	140	200
<b>B</b>	3,5	4	4	5	5,5	6	6	7	9	9	10	12	13	12	15
<b>C</b>	6	8	8	10	14	16	16	18	25	25	28	36	40	36	45
<b>D</b>	50	50	50	50	90	90	100	90	110	110	125	160	180	160	220
<b>E</b>	52	46	52	53	93	94	100	92	113	115	128	174	176	171	220



# TRI-CON

## ERSATZTEILPAKET SPARE PARTS KIT



	<b>Lamelle</b> Laminated Seal
	<b>Packung (Schnüre, Ringe)</b>
	<b>Packing (Ropes, Rings)</b>
	<b>Deckeldichtung</b> Cover Seal
	<b>Abschlussdichtung</b> Gasket

Material / Ausführung / Stückzahl in Abhängigkeit zur gelieferten Absperrklappe  
Material / type / quantity in dependence to the delivered valve

## ZERTIFIKATE / CERTIFICATES

- BAM-Zulassung für Sauerstoff / BAM-Approval for Oxygen
- TA-Luft gem. / acc. to VDI 2440
- DIN EN ISO 9001:2008
- ISO 15848-1:2006
- Fire Safe gem. / acc. to API 607
- Fire Safe gem. / acc. to British Standard B.S.6755
- Fire Safe gem. / acc. to DIN EN ISO 10497
- CE-Zertifikat / CE-Certificate gem. / acc. to 97/23/EG
- SIL3
- GOST
- RTN
- CRN

